

SERIAL PORT TOOL

N-Button Lite Quick Start Guide



SERIAL PORT TOOL

N-Button Lite Quick Start Guide

© Copyright 2014
All Rights Reserved.

Notice: Portions of this manual require internet access.

Table of Contents

Real-Time Status & Control	1
All The Features You Need.....	1
Getting Started.....	2
Useful Features.....	2
USB and Network Compatible	2
Supports Up To 16 Widgets.....	2
Create Desktop Meters	3
Create Custom Buttons	3
Create Relay Buttons.....	3
Create Relay Status Widgets.....	4
Backgrounds	4
Control Other Devices Besides Relay Boards	4
Using N-Button Lite	5
Install.....	5
N-Button Lite Manager.....	6
Add Relay Button	8
Add Relay Status	9
Add AD Meter	10

Add Scan Channel	11
Add Dimmer Button.....	12
Add Dimmer Slider.....	13
Add Camera Widget.....	14
Add PTZ Button	15
Add Label.....	16
Add Customized Button	17
Add Advanced Customized Button	18
Send Email/Text Message.....	19
Email to Text Message with N-Button.....	22
Exit	25

Introduction

Real-Time Status & Control

N-Button Lite creates up to 16 widgets that float on your desktop to control external RS232 or network devices, send specified data, run applications or send http request. It supports Serial Port/USB and Network connection between PC and devices. It allows you to access and control the widgets remotely. Through internet browser, you can control your devices from anywhere with your computer, iPhone, iPad, Android tablet, Windows tablet as well as Linux and Mac. N-Button Lite makes it possible to control your devices without any programming!

All The Features You Need...

- Create Desktop Buttons and Widgets
- Relay Button widgets are used to turn relays on/off directly.
- Relay Status widgets are used to display status of the relay automatically.
- A/D Meter widgets are used to read and show the value of A/D channel automatically.
- Internet Operation
 - Enter IP address of Board
- Static Label widgets allow you to show static text or image on your desktop.
- Create Custom Background
 - With your company logo
 - With any picture you choose
 - With N-Button Background Plug-In

Getting Started

Useful Features

USB and Network Compatible

N-Button Lite supports Serial Port/USB and Network connection between the PC and the relay board. Add any type of included N-Button Lite widgets with N-Button Lite Manager. It's also very easy to modify the widget's properties to get the button and configuration you are looking for. N-Button Lite is not compatible with Reactor/Key Fob or Taralist relays since these controllers have their own configuration software included with the board or MicC/MirX controllers since these don't require any software or programming at all.

Supports Up To 16 Widgets

N-Button Lite has all the buttons and widgets of the full version and supports up to 16 widgets. Created for users with smaller needs to save money, N-Button Lite is a powerful tool for controlling relays or reading A/D inputs with up to 16 widgets. *N-Button Lite only supports up to 16 widgets.* If you want to add more than 16 widgets, simply upgrade to the N-Button Pro Professional version.

Create Desktop Meters

Desktop Meters can be created for real time level readings of any variable input sensor. “It’s like having meter right on your desk for constant monitoring”.

Meters can be created for temperature sensors, moisture sensors, light meters and others. Read the sensor and create relay buttons that will allow at-a-glance determination of the relay status. Best of all the increments on the meter can be fully customized to fit your needs! Choose an Analog to Digital controller (look for AD in the part number) purchase a copy of N-Button or N-Button Lite and you can read the A/D levels right on your desktop! If you have an application where you need to track sensor levels you will have a live real time meter right on your desktop!



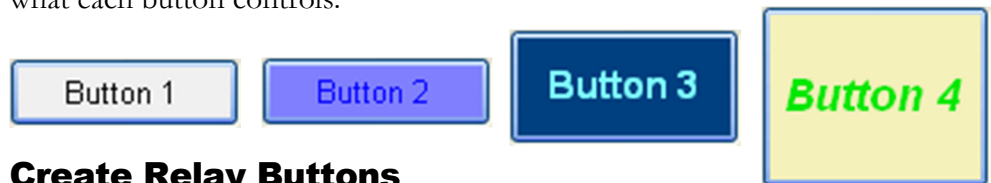
a



Create

Custom Buttons

When you create custom buttons in N-Button Lite you can use any of the commands that are in a ProXR Command Set (provided you purchase a ProXR relay). You can find the [full command set here](#). It’s quite extensive and you can configure the buttons to activate these commands. These buttons will be on your desktop of your computer and when you click on a button it will send the command to the board provided the board is connected to the computer. You can also change the shape, color, and text of each button so you will know exactly what each button controls.



Create Relay Buttons

Relay Button widget turn on/off relays directly. It has never been easier to control relays, no programming skills required. Create a button that turns a relay on and another one to turn the relay off or create a button that toggles the relay on and off. It’s up to you and easy to configure with the N-Button Lite Software.



Create Relay Status Widgets

Relay Status widgets shows the status of the relay automatically. Just a glance at your desktop will show the status of the relay!



Backgrounds

Add some style to your desktop with N-Button and N-Button Lite you can create backgrounds and holders for your buttons like the virtual Key Fob (or “V” Fob as we like to call it). Create your own button functions or use one of our pre-installed “V” Fobs ready for download. Look for the download file in the resource box on the [N-Button Lite Software page](#) of our website.



With the example to the right you can toggle Relay 1, 2, 3, and 4 on and off and use the red button to turn off all relays. This is compatible with all ProXR Relays as well as R4xPro/R8xPro relay boards and available as a free plug-in.



Control Other Devices Besides Relay Boards

Customized Button widgets can be set to send specified data to any other connected devices besides relay boards. It can be set to open a file, a folder or a program, run any application or send http request. It also supports send data list. A group of data can be sent to serial port or IP address just by clicking the created button.

Using N-Button Lite

Install

Step 1: Download N-Button Lite zip file.

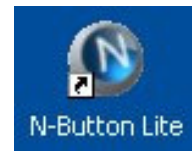
Step 2: Unzip the download file.

Step 3: Double click setup.exe file.

Step 4: Follow the default instruction to finish the installation.

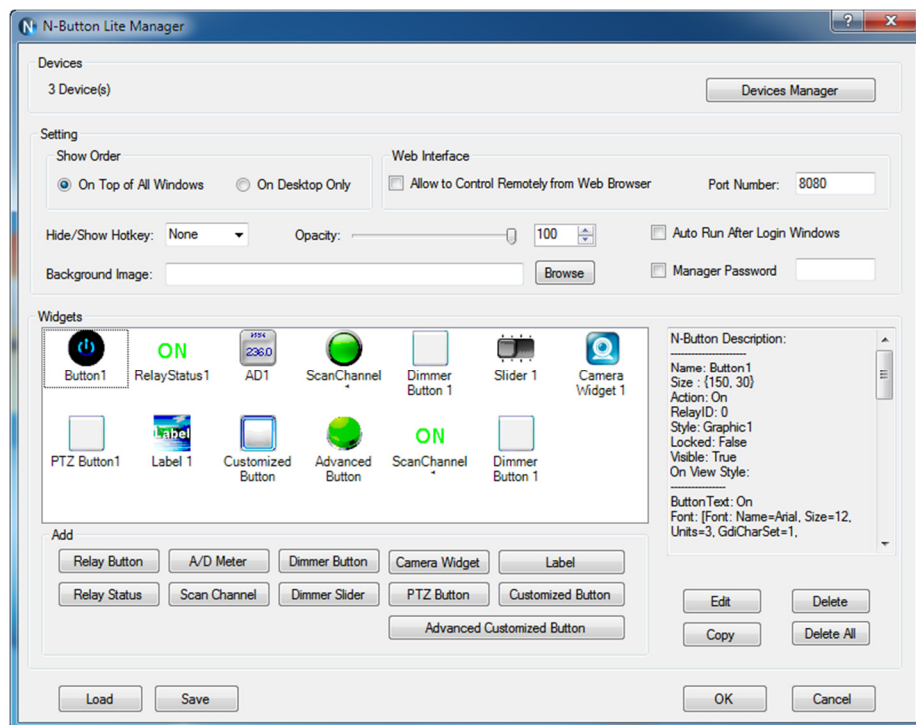
Step 5: N-Button Lite icon will be shown on your desktop.

Step 6: Double click the N-Button Lite icon to run it. It also can be run by clicking Start → All Programs → Button Lite → N-Button Lite.



N-

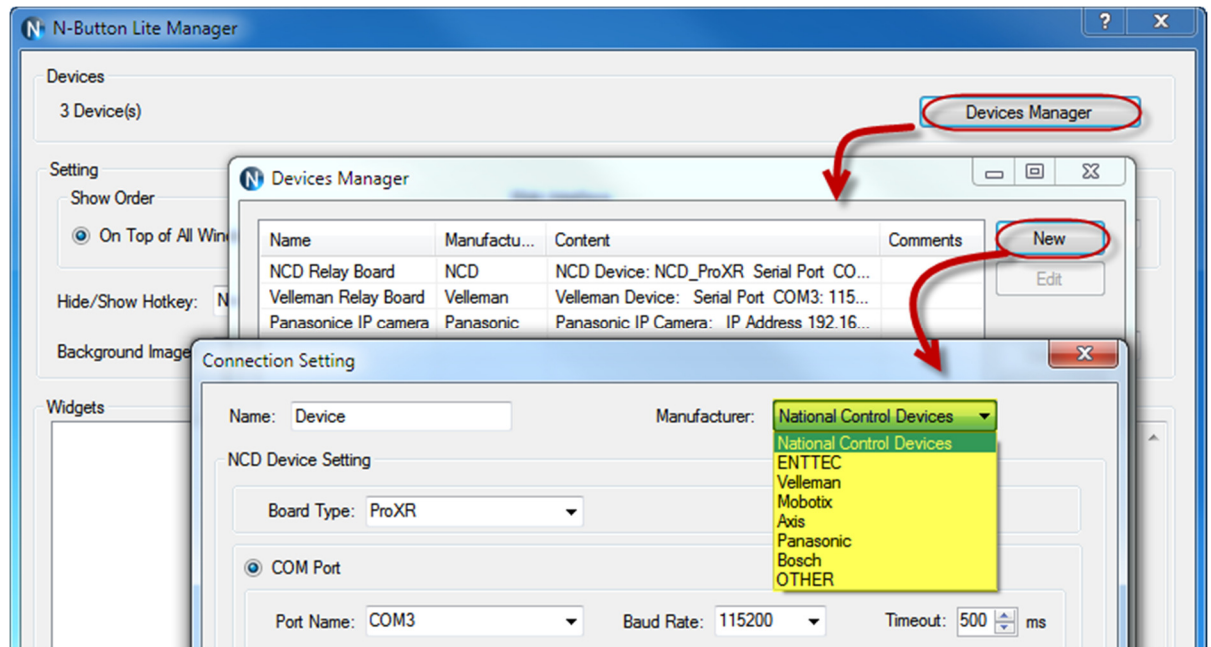
N-Button Lite Manager will be shown on your screen:



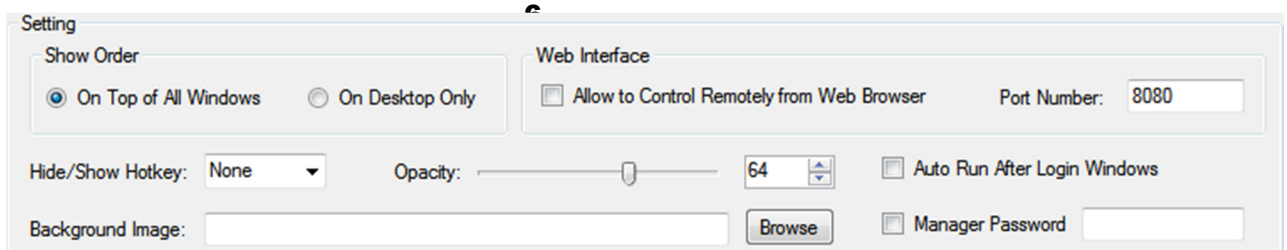
N-Button Lite Manager

The type of device and connection method must be selected on N-Button Lite Manager before creating any widget to control the device.

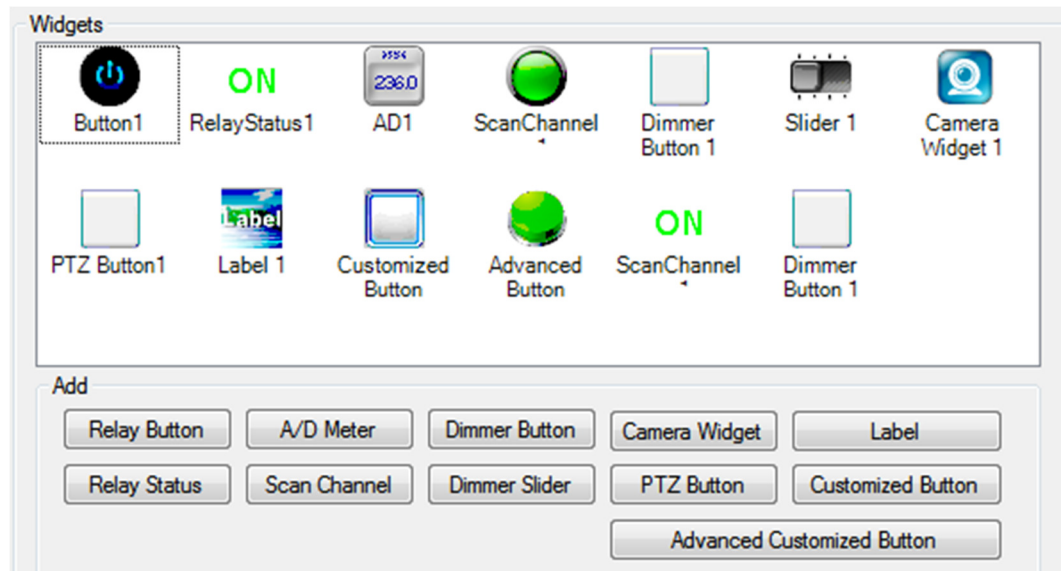
- N-Button Lite supports devices of National Control Devices, ENTTEC, Velleman, Mobotix, Axis, Panasonic, Bosh IP cameras and also other serial port/USB or network devices.



- N-Button Lite supports settings for **Show Order**, **Web Interface**, **Hide/Show Hotkey**, **Opacity**, and **Background** of widgets, **Auto run after login Windows**, as well as **Password** for opening this Manager panel. N-Button Lite allows you to access the created widgets remotely. The widgets can be viewed and controlled through a web browser.



- 11 types of widgets can be created **Relay Button**, **Relay Status**, **A/D Meter**, **Scan Channel**, **Dimmer Button**, **Dimmer Slider**, **Camera Widget**, **PTZ Button**, **Label**, **Customized Button**, and **Advanced Customized Button**.



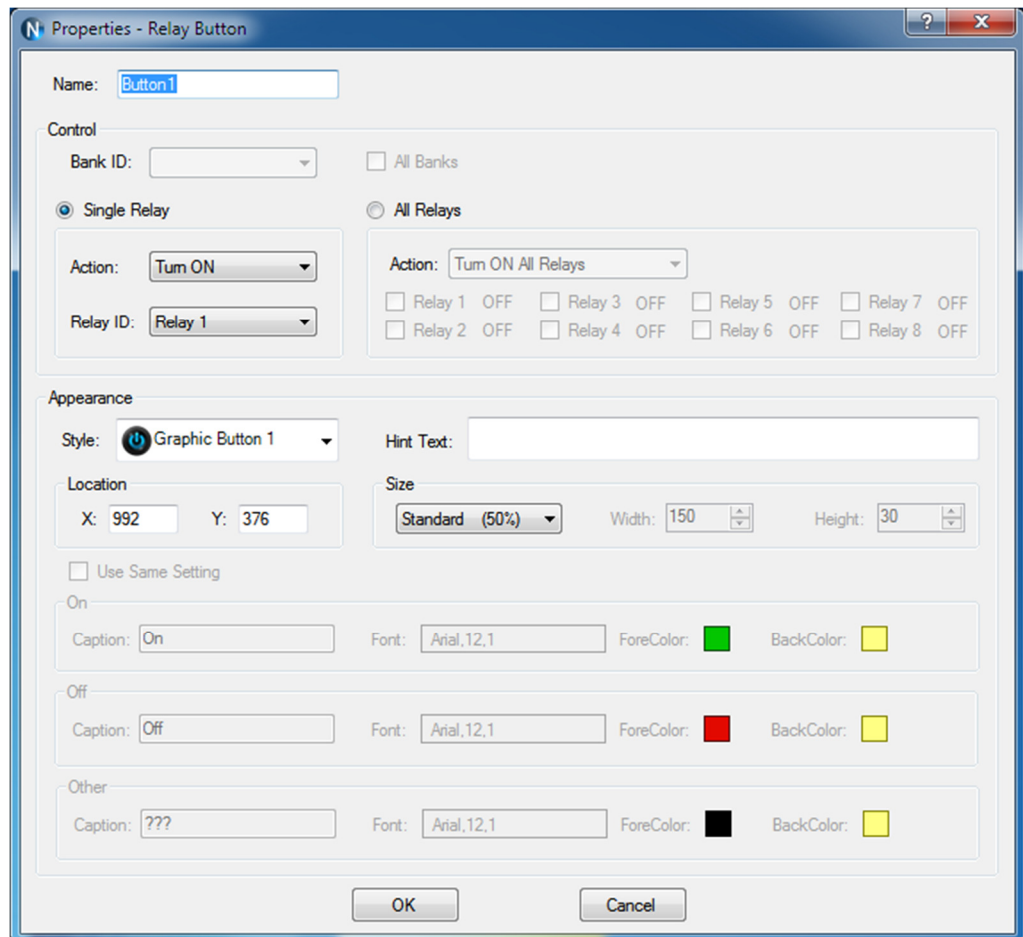
*N-Button Lite version supports up to 16 widgets only.

*N-Button Pro version supports up to 256 widgets.

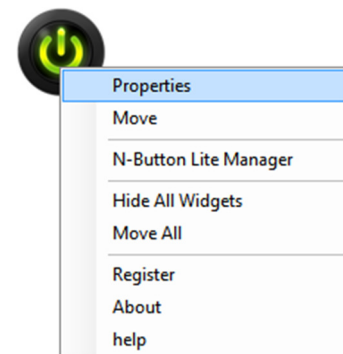
Add Relay Button

Step 1: Click “Add Relay Button” on N-Button Lite Manager to show Properties-Relay Button dialog. This dialog is used to set control action and appearance for Relay Button widgets.

Relay Button widget can be set to control single relay or multi relays. It can turn on/off relays, toggle relay status, and set status of relays.



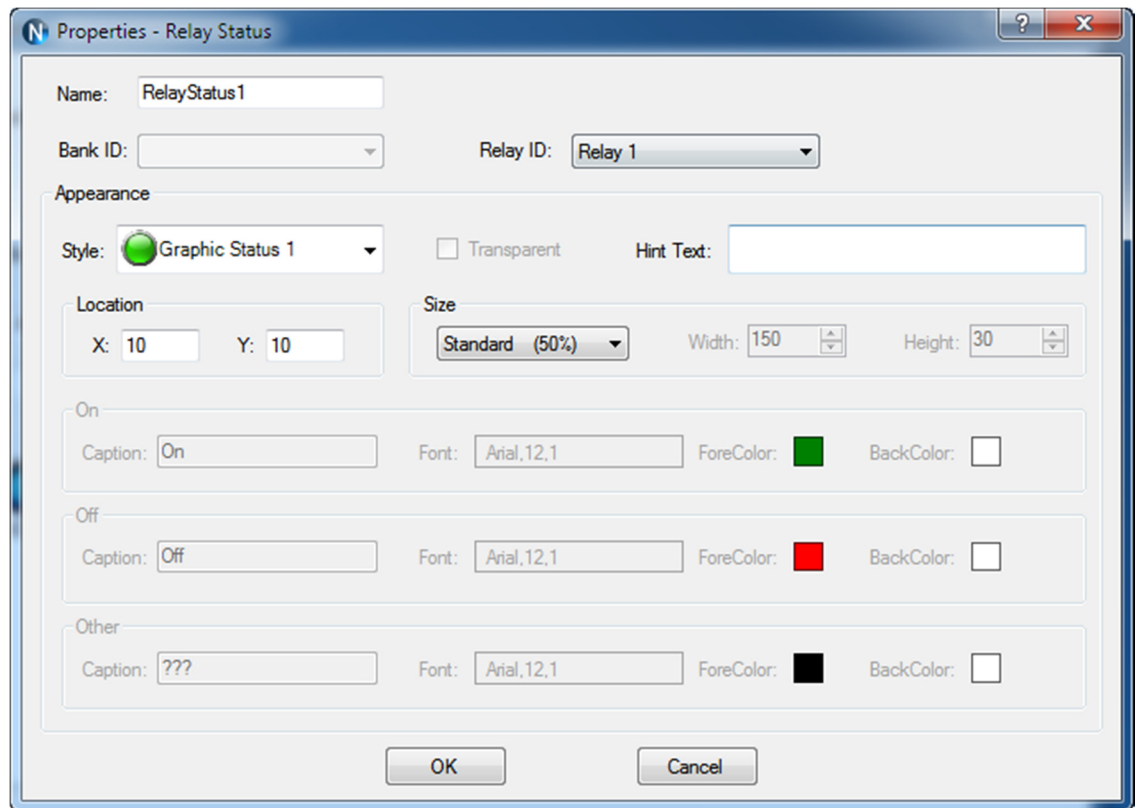
Step 2: Right-click a created Relay Button, selecting Properties option on pop-up menu to edit its properties.



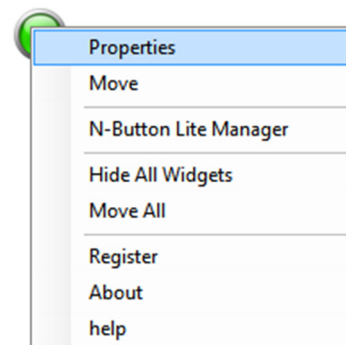
Add Relay Status

Step 1: Click “Add Relay Status” on N-Button Lite Manager to show **Properties-Relay Status** dialog. This dialog is used to set relay ID and appearance for Relay Status widgets.

Relay Status is used to indicate the specific relay’s status. It has three statuses, On/Off and other (unknown). The widget will be refreshed automatically when a relay’s command is issued. If it fails to get the status of the relay, it will show the status of unknown. Use Relay Status widgets with Relay Button widgets together to control the relays and show their status their status on the desktop.



Step 2: Right-click a created Relay Status, selecting Properties option on pop-up menu edit its properties.



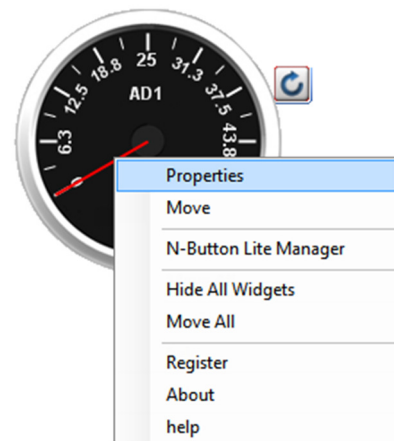
to

Add AD Meter

Step 1: Click “Add AD Meter” on N-Button Lite Manager to show **Properties-AD Meter** dialog. This dialog is used to set relay ID and appearance for A/D Meter widgets.

AD Meter widget will read the value of A/D channel and show the value on the screen. The raw value of A/D channel is 0-255. The meter can map the value to different range, like 0-5, which is voltage on A/D channel or other value you want. The widgets can update the value at specific interval automatically as well as refreshed manually.

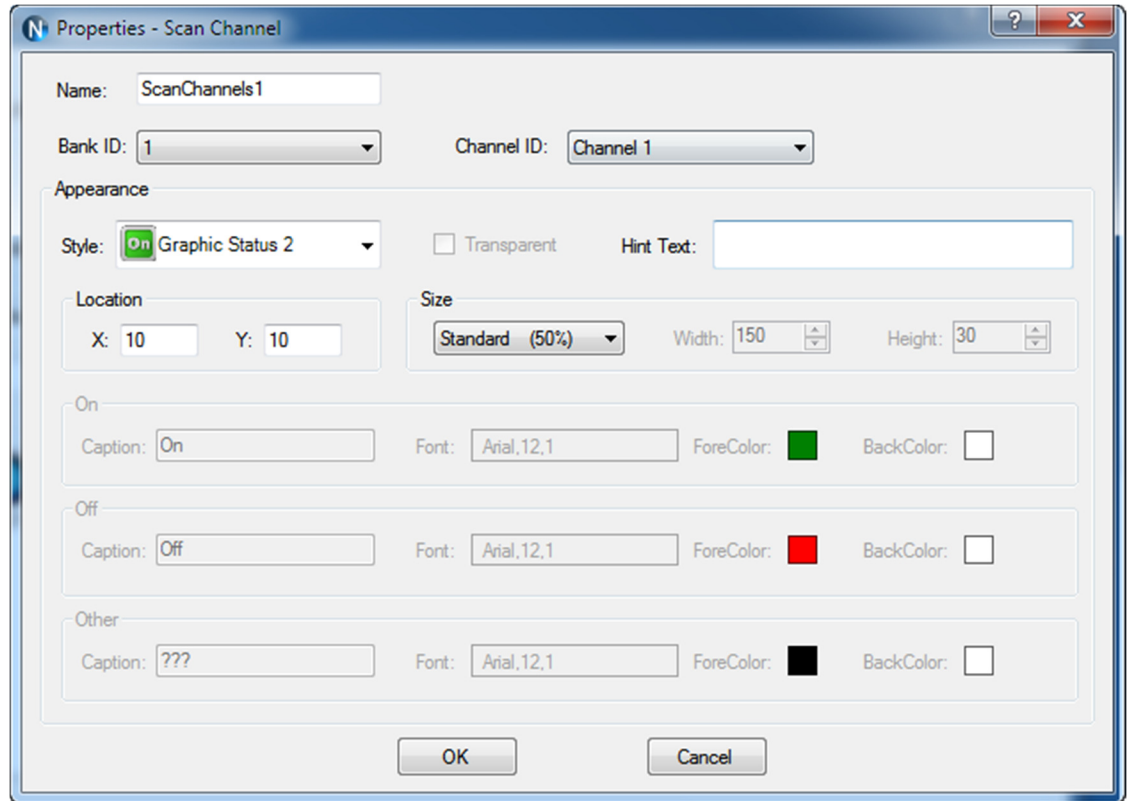
Step 2: Right-click a created AD Meter, selecting Properties option on pop-up menu to edit its properties.



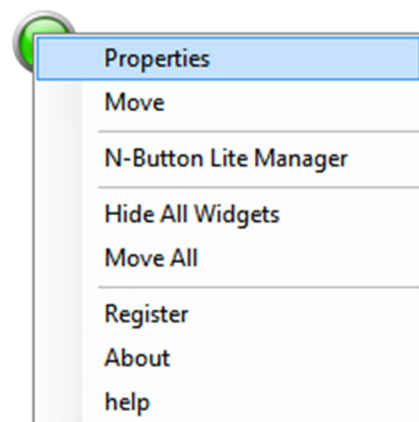
Add Scan Channel

Step 1: Click “Scan Channel” on N-Button Lite Manager to show Properties-Scan Channel dialog.

Scan Channel is used to read the contact closure inputs. It will show On/Off and other (unknown). The widget will show the status of the contact closure inputs automatically. If it fails to get the status of the inputs, it will show the status of unknown.



Step 2: Right-click a created Label, selecting Properties option on pop-up menu to edit its properties.



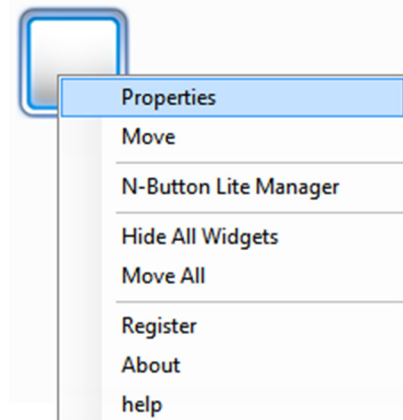
Add Dimmer Button

Step 1: Click “Dimmer Button” on N-Button Lite Manager to show Properties-Dimmer Button dialog.

This dialog is used to show a static text or an image.

Channel No	Selected	Brightness
0	<input checked="" type="checkbox"/>	0
1	<input type="checkbox"/>	0
2	<input type="checkbox"/>	0
3	<input type="checkbox"/>	0
4	<input type="checkbox"/>	0
5	<input type="checkbox"/>	0
6	<input type="checkbox"/>	0
7	<input type="checkbox"/>	0
8	<input type="checkbox"/>	0

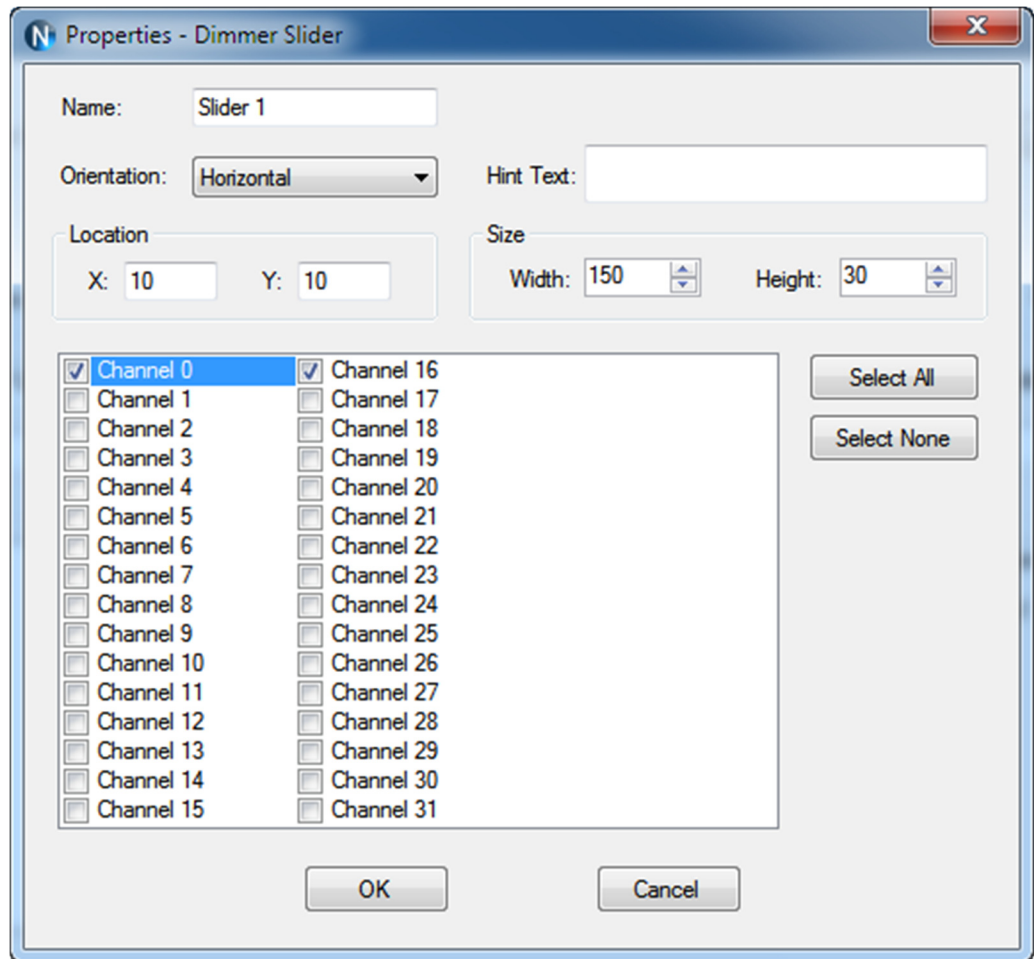
Step 2: Right-click a created Label, selecting Properties option on pop-up menu to edit its properties.



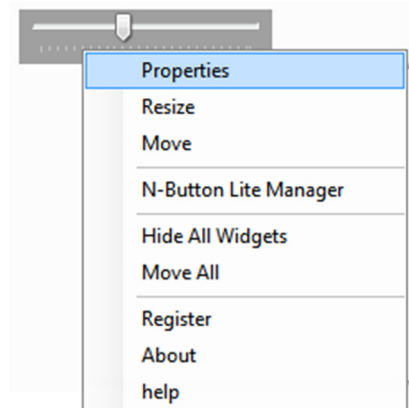
Add Dimmer Slider

Step 1: Click “Dimmer Slider” on N-Button Lite Manager to show Properties-Dimmer Slider dialog.

This dialog is used to show a static text or an image.



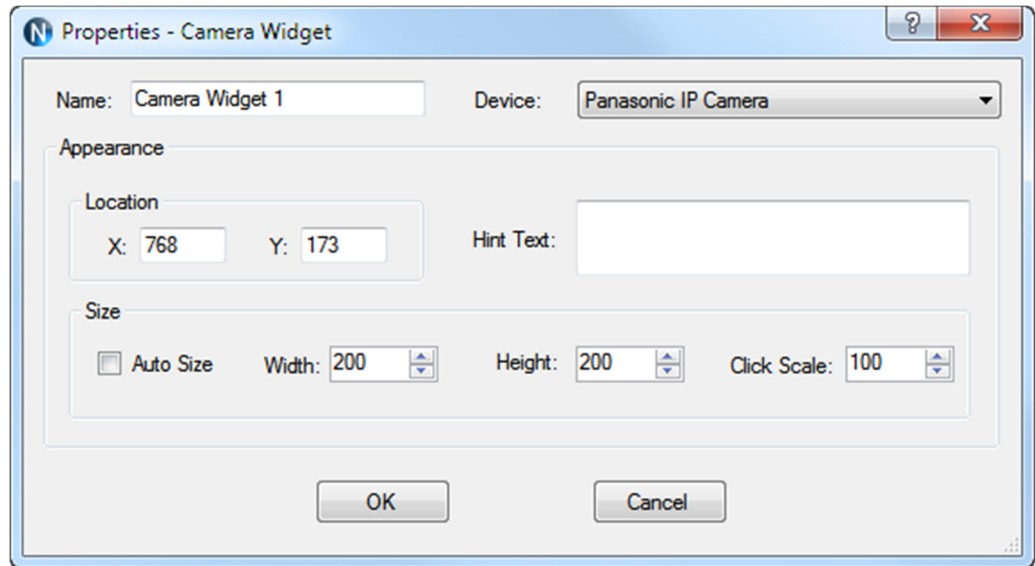
Step 2: Right-click a created Label, selecting Properties option on pop-up menu to edit its properties.



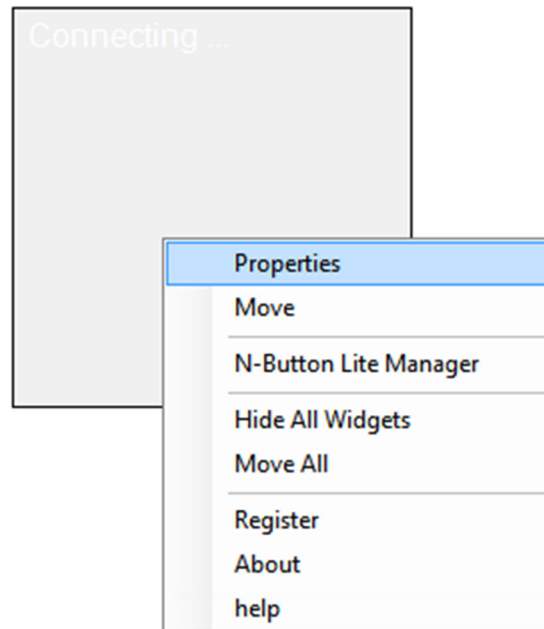
Add Camera Widget

Step 1: Click “Camera Widget” on N-Button Lite Manager to show **Properties-Camera Widget** dialog.

This dialog is used to set action and appearance for Camera Widget.

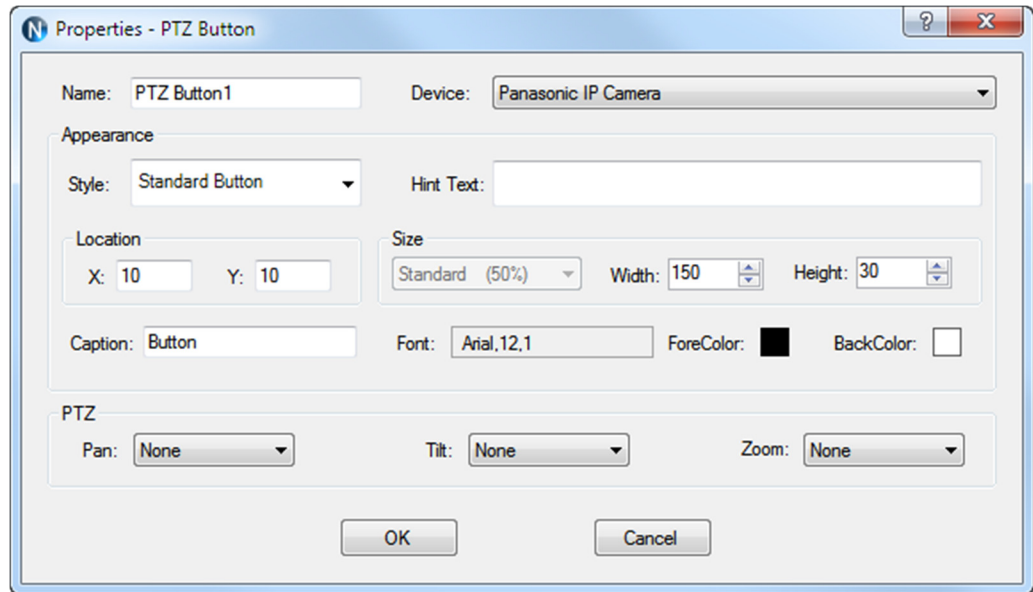


Step 2: Right-click a created Label, selecting **Properties** option on pop-up menu to edit its properties.

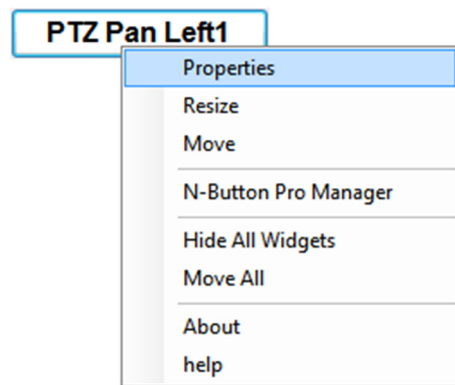


Add PTZ Button

Step 1: Click “Label” on N-Button Lite Manager to show **Properties-Label** dialog. This dialog is used to set action and appearance for PTZ Button widgets.

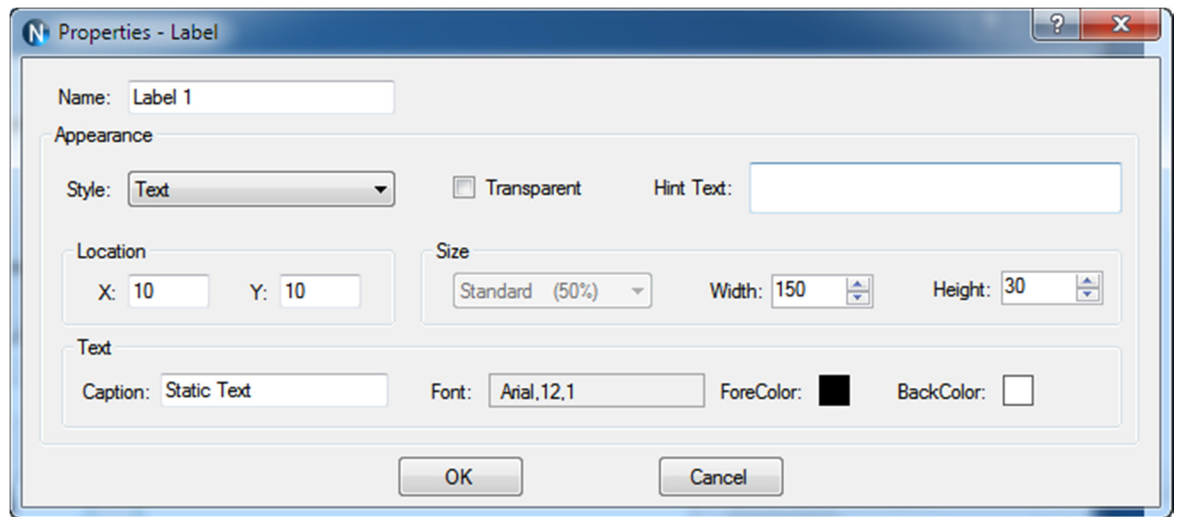


Step 2: Right-click a created Label, selecting **Properties** option on pop-up menu to edit its properties.

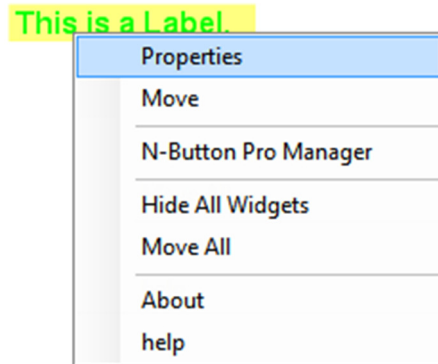


Add Label

Step 1: Click “Label” on N-Button Lite Manager to show Properties-Label dialog. This dialog is used to show a static text or an image.



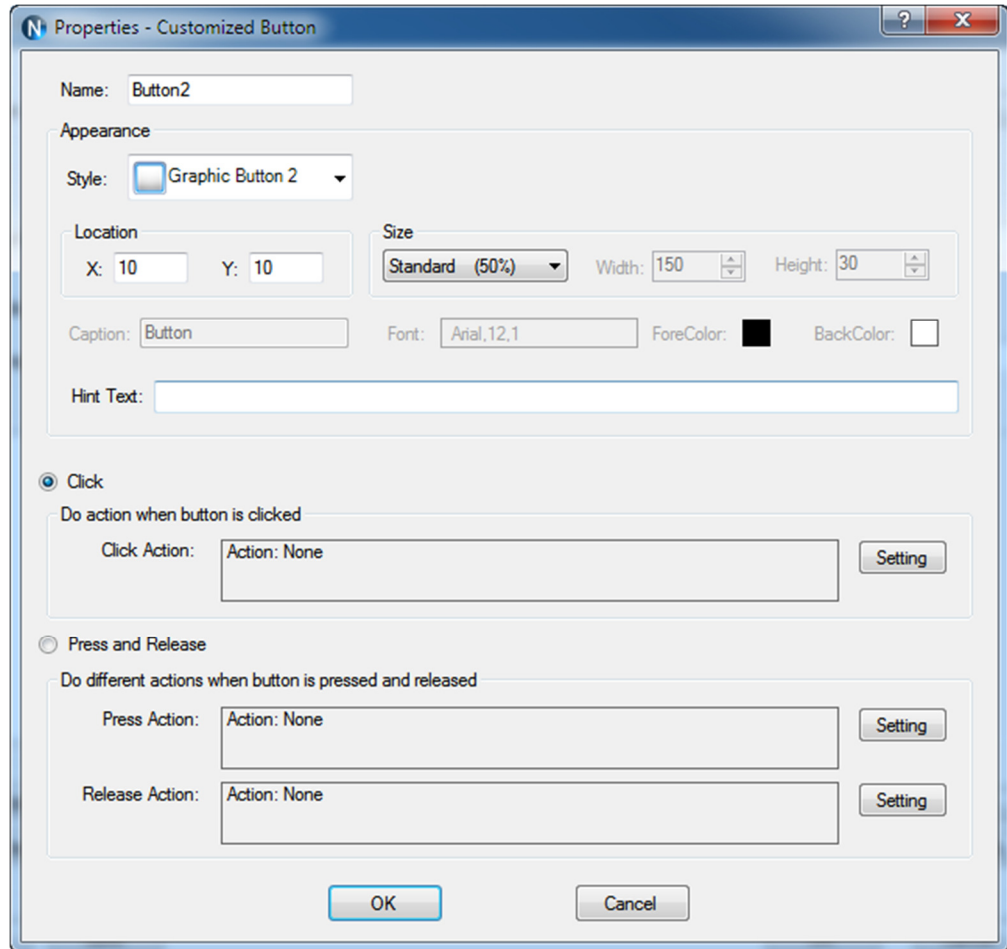
Step 2: Right-click a created Label, selecting Properties option on pop-up menu to edit its properties.



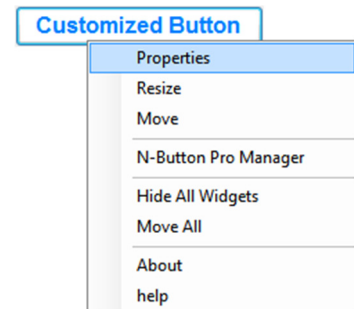
Add Customized Button

Step 1: Click “Customized Button” on N-Button Lite Manager to show Properties-Customized Button dialog. This dialog is used to set action and appearance for Customized Button widgets.

Customized Button can be set to send specified data to any other connected devices besides relay boards. It also can be set to open a file, a folder, or a program, run any application and send http request.



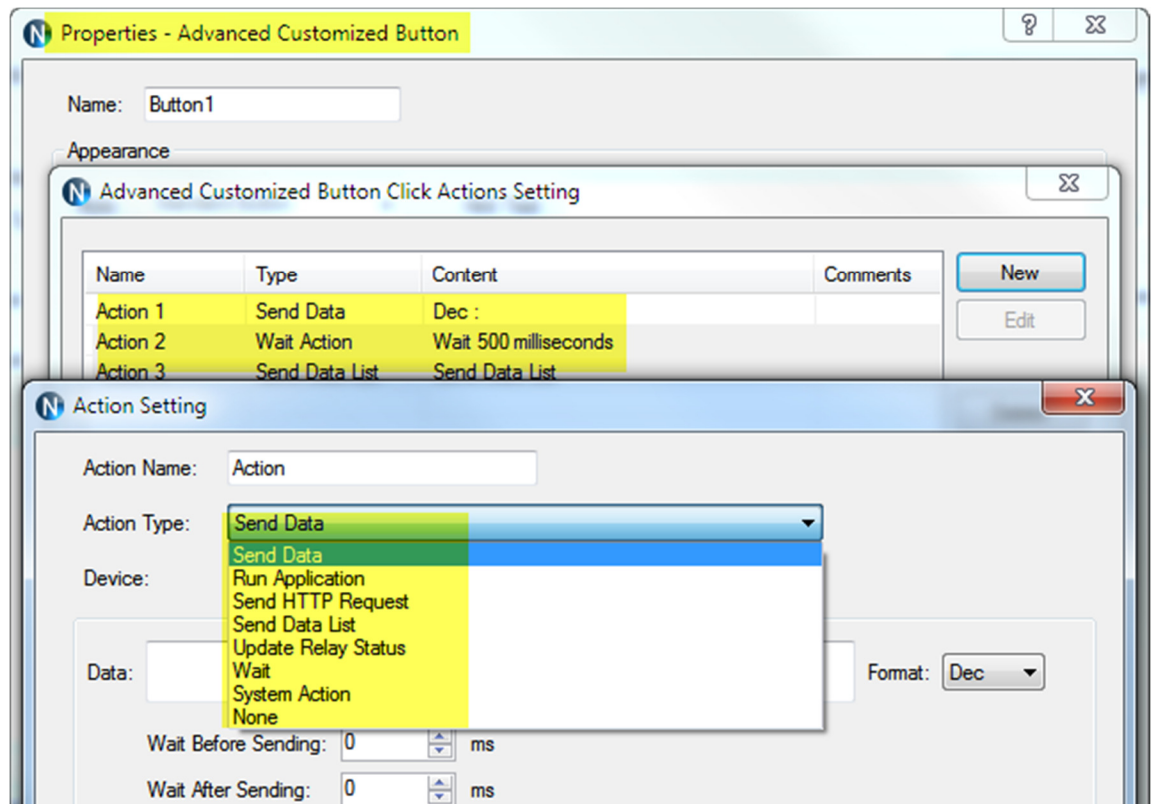
Step 2: Right-click a created Customized Button, selecting Properties option on pop-up menu to edit its properties.



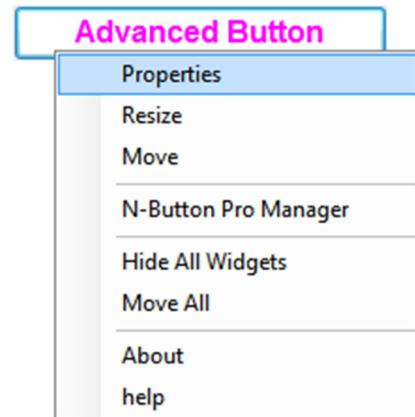
Add Advanced Customized Button

Step 1: Click “Advanced Customized Button” on N-Button Lite Manager to show **Properties-Advanced Customized Button** dialog. This dialog is used to set action and appearance for Advanced Customized Button widgets.

Advanced Customized Button allows you to control different devices at the same time. Several actions can be added and each action can work for different devices.



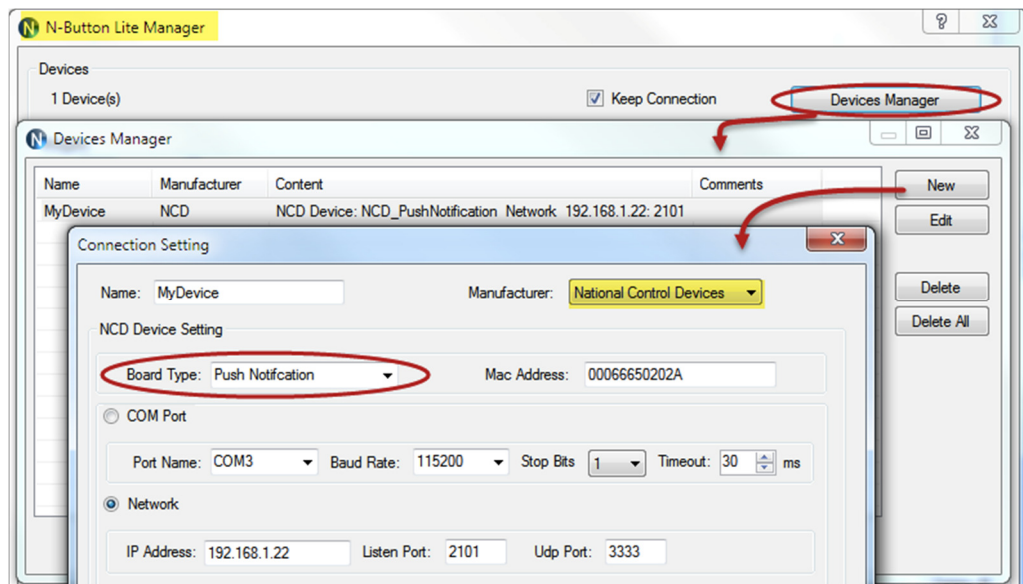
Step 2: Right-click a created Label, selecting **Properties** option on pop-up menu to edit its properties.



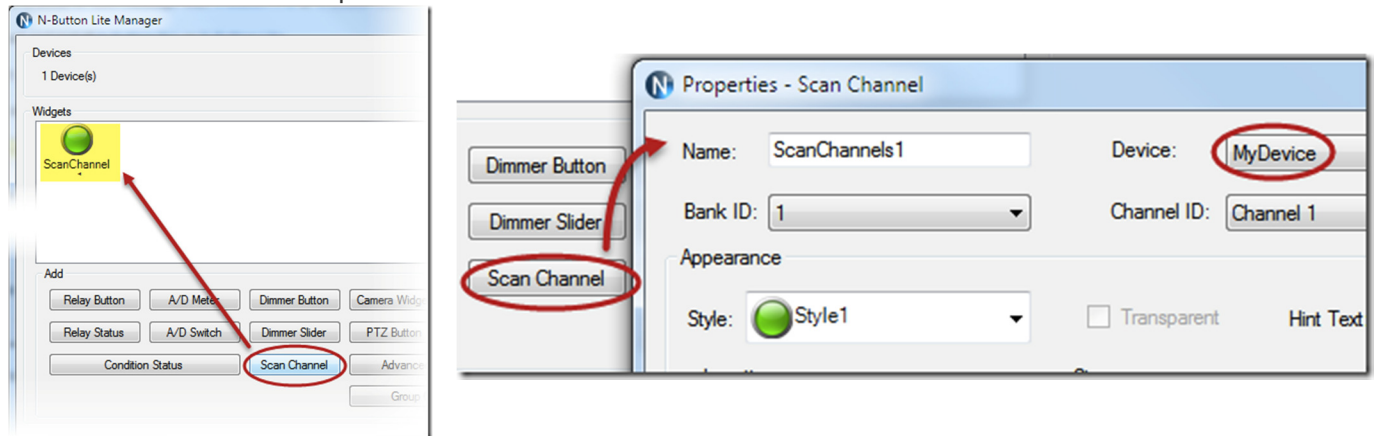
Send Email/Text Message with Push Notification Board

Here are steps to allow your Push Notification board (get the board from Relay Pros) to send an Email or text message with N-Button Pro or N-Button Lite.

1. Download and install N-Button Pro or N-Button Lite.
2. Connect your Push Notification board with your computer.
3. Run N-Button Pro/Lite to show N-Button Pro/Lite Manager
4. Add the connected Push Notification board to **Devices Manager**.

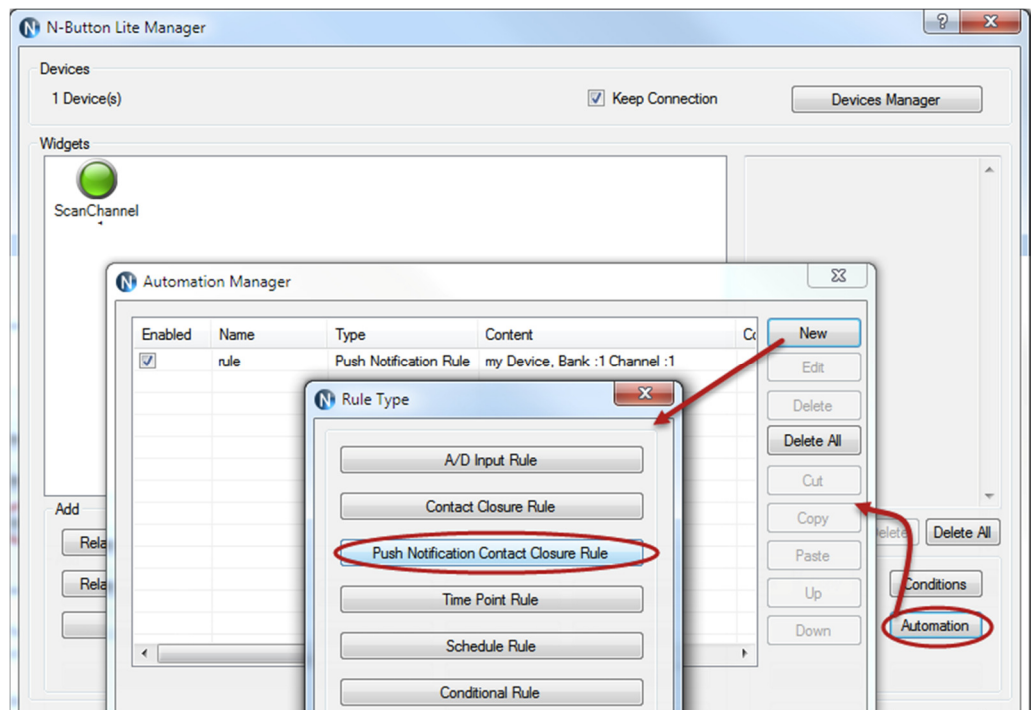


5. Add a **Scan Channel** to show the status of Push Notification board on your desktop



6. The Scan Channel widget will change the status when you push the button of the Push Notification Board.

7. Open N-Button Pro/Lite Manager again. Click **Automation** to add a **Push Notification Contact Closure Rule**.



8. Set the action to **Send Email** for when Status Changes from Open to Close, or from Close to Open.

Push Notification Contact Closure Rule

Name: rule

Contact Closure Setting
MyDevice, Bank :1 Channel :1 Setting

Action when Status Changes from Open to Close
Email Action Setting Clear

Actions setting when condition changes from False To True

Action Name: Action

Action Type: Send Email

Action Device: MyDevice

Server: smtp.gmail.com Port: 587 ☒ Using SSL

Username: [redacted]@gmail.com Password: 123456

Send To: 41...76@vtext.com

Subject: Send Text Message from Gmail

Body: Send Text Message from Gmail by N-Button

Your Gmail account and password

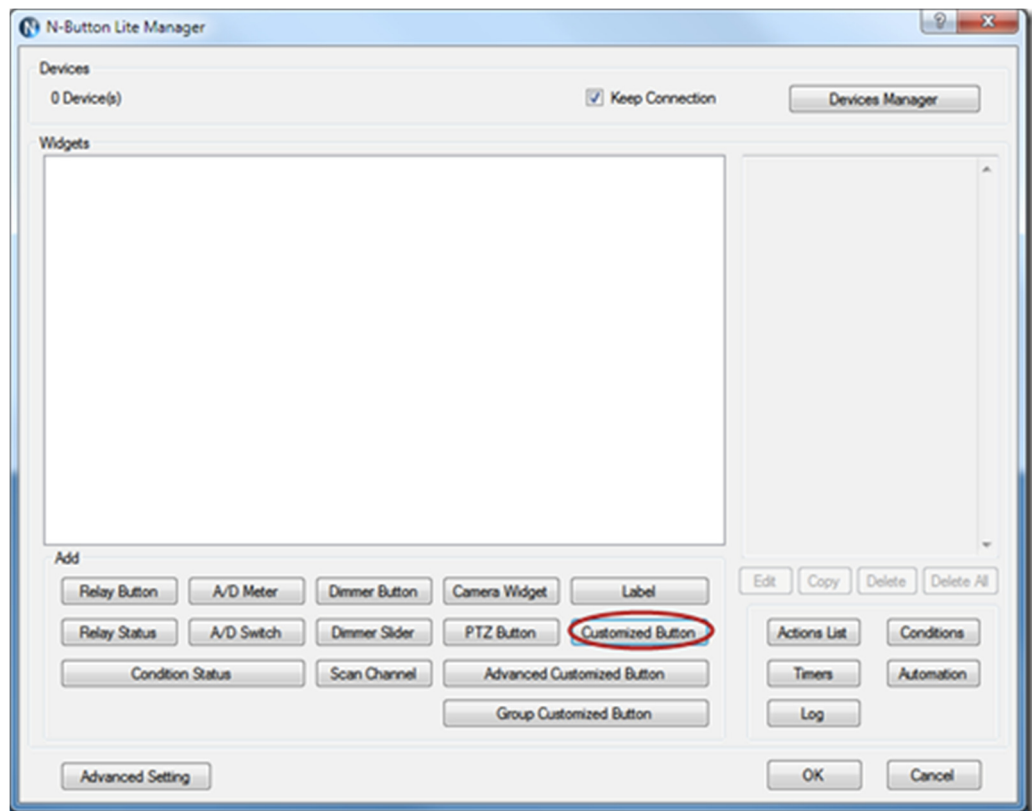
Your cellular phone number with carriers' email format

9. After finishing all above settings, you will receive text message once the Push Notification board changes.

Email to Text Message with N-Button

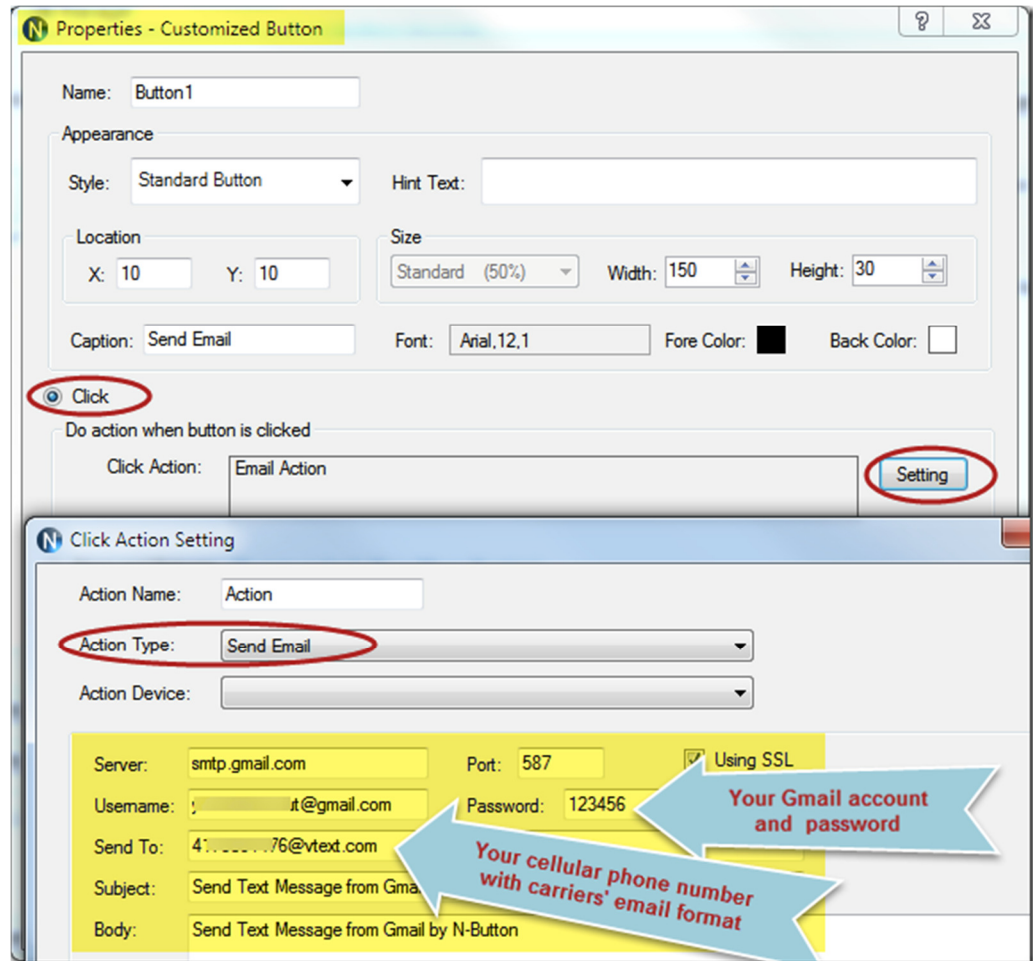
Here are the steps to allow your Push Notification to send an Email to text message with N-Button Pro/Lite.

1. Download and install N-Button Pro or N-Button Lite.
2. Run N-Button Pro/Lite to show N-Button Pro/Lite Manager panel.



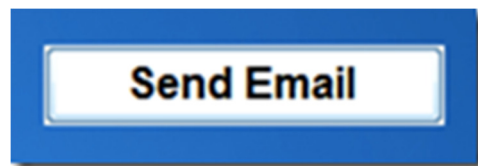
3. Click **Customized Button** to show Properties – Customized Button panel.
4. Select **Click** → **Setting** to show **Click Action Setting**.
5. Select **Send Email** for action type, and input all information for sending and receiving email.

Here is the example to send text message to Verizon cell phone from Gmail account. You also can send with other Email to any email address you want, as long as you know the Server setting and the email address format for your cellular



phone carrier.

6. You will get a Button on your desktop after above settings.



7. You will receive a text message once you click the Button, if all your setting is correct.

Note:

If you use Gmail to send email or text message, please change **Access for less secure apps** to enable in your Gmail account.

You might receive a mail from Google with the content below.

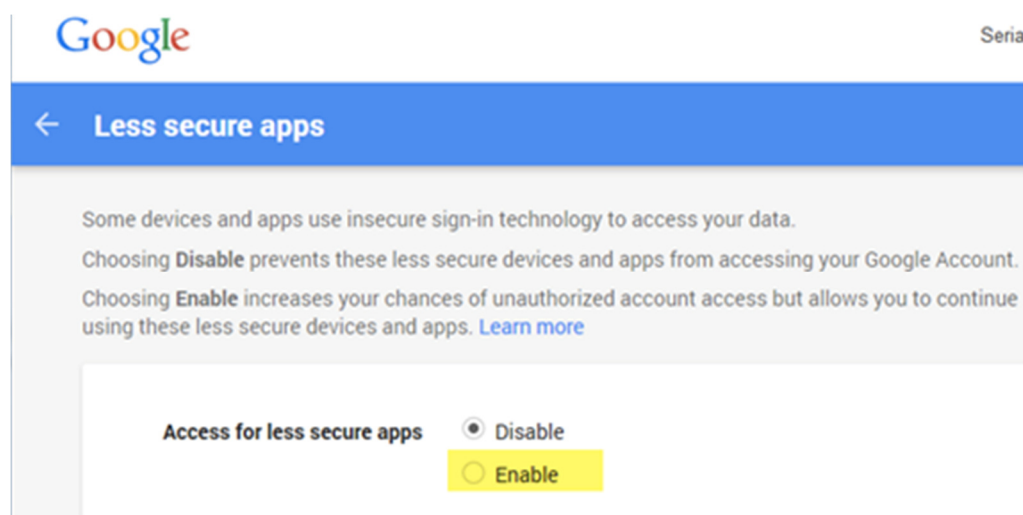
If this wasn't you

Please review your Account Activity page at <https://security.google.com/settings/security/activity> to see if anything looks suspicious. Whoever tried to sign in to your account knows your password; we recommend that you change it right away.

If this was you

You can switch to an app made by Google such as Gmail to access your account (recommended) or change your settings at <https://www.google.com/settings/security/lesssecureapps> so that your account is no longer protected by modern security standards.

You need to open the highlight link and select **Enable**. The default setting is Disable.



Once you know how to send email or text message with N-Button Pro/Lite, you can set it with other functions in N-Button, such as Automation, Conditions, to get text message automatically when some actions happen.

Exit

Right click N-Button Lite icon on status bar to show pop-up menu.
Click Exit item to quit N-Button Lite.

