

SERIAL PORT TOOL

N-Button Pro Quick Start Guide



SERIAL PORT TOOL

Template Quick Start Guide

© Copyright 2014
All Rights Reserved.

Notice: Portions of this manual require internet access.

Table of Contents

Introduction	1
Control Relays Right From Your Desktop	1
N-Button Lite	1
Widget Options	2
Relay Button	2
Relay Status.....	2
A/D Meter	2
Customized Button.....	2
Using N-Button Lite	3
Install.....	3
N-Button Pro Manager	4
Add Relay Button	6
Add Relay Status	7
Add AD Meter	8
Add Scan Channel.....	9
Add Dimmer Button.....	10
Add Dimmer Slider.....	11
Add Camera Widget.....	12

Add PTZ Button	13
Add Label.....	14
Add Customized Button	15
Add Advanced Customized Button	16
Exit	17

Introduction

Control Relays Right From Your Desktop

N-Button creates widgets to control most NCD relay controller boards without any programming!

N-Button supports Serial Port/USB and Network connection between the PC and the relay board. Add any type of included N-Button widgets with N-Button Manager. It's also very easy to modify the widget's properties to get the button and configuration compatible with Reactor/Key Fob or Taralist relay since these controllers have their own configuration software included with the board or MirC/MirX controllers since these don't require any software or programming at all.

N-Button Lite

N-Button Lite has all the button and widgets of the full version and supports up to 8 widgets. Created for users with smaller needs to save money, N-Button Lite is a powerful tool for controlling relays or reading A/D inputs with up to 8 widgets. If you want to add more than 8 widgets, simple upgrade to the standard version.

Widget Options

There are four types of widgets, Relay Button, Relay Status, A/D Meter, and Customized Button.

Relay Button

Relay Button widgets turn on/off relays directly. It has never been easier to control relays before. Create a button that turns a relay on and another one to turn the relay off or create a button that toggles the relay on and off. It's up to you and easy to configure with the N-Button software!



Relay Status

Relay Status widgets show status of the relay automatically. Just glancing at your desktop will show the status of the relay!



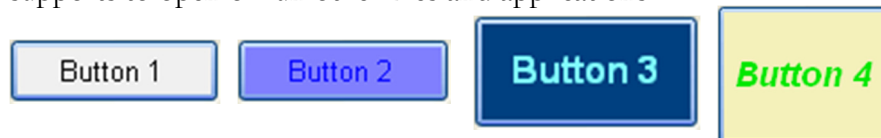
A/D Meter

A/D Meter widgets are probably the best of all since they display the value of A/D channel automatically. If you are measuring light levels, temperature levels or any kind of sensor it's like having a meter right on your desk for constant monitoring. Best of all the increments on the meter can be fully customized to fit your needs! Choose an Analog to Digital controller (look for AD in the part number) purchase a copy of N-Button or N-Button Lite and you can read the A/D levels right on your desktop.



Customized Button

Customized Button widgets can send user-defined data to relay board. It also supports to open or run other files and applications.



Using N-Button Lite

Install

Step 1: Download N-Button Lite zip file.

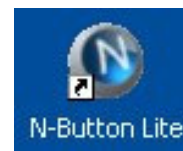
Step 2: Unzip the download file.

Step 3: Double click setup.exe file.

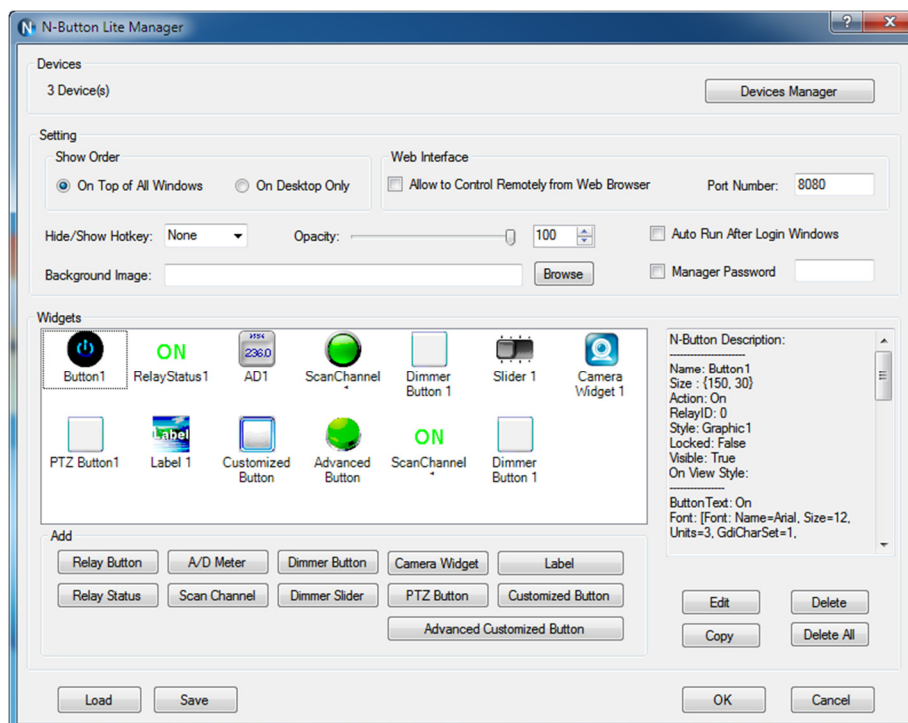
Step 4: Follow the default instruction to finish the installation.

Step 5: N-Button Lite icon will be shown on your desktop.

Step 6: Double click the N-Button Lite icon to run it. It also can be run by clicking Start → All Programs → N-Button Lite → N-Button Lite.

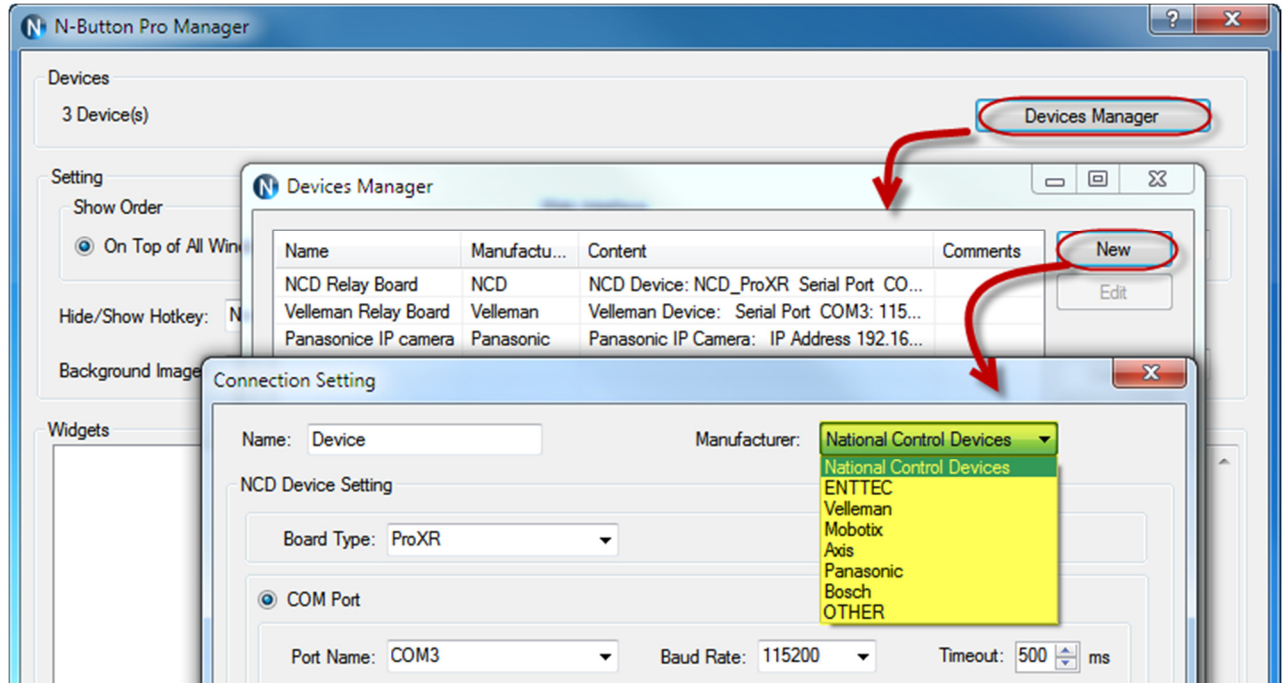


N-Button Lite Manager will be shown on your screen:

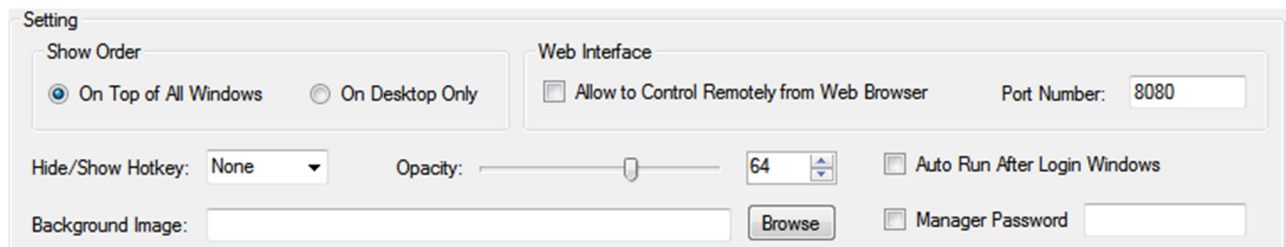


N-Button Pro Manager

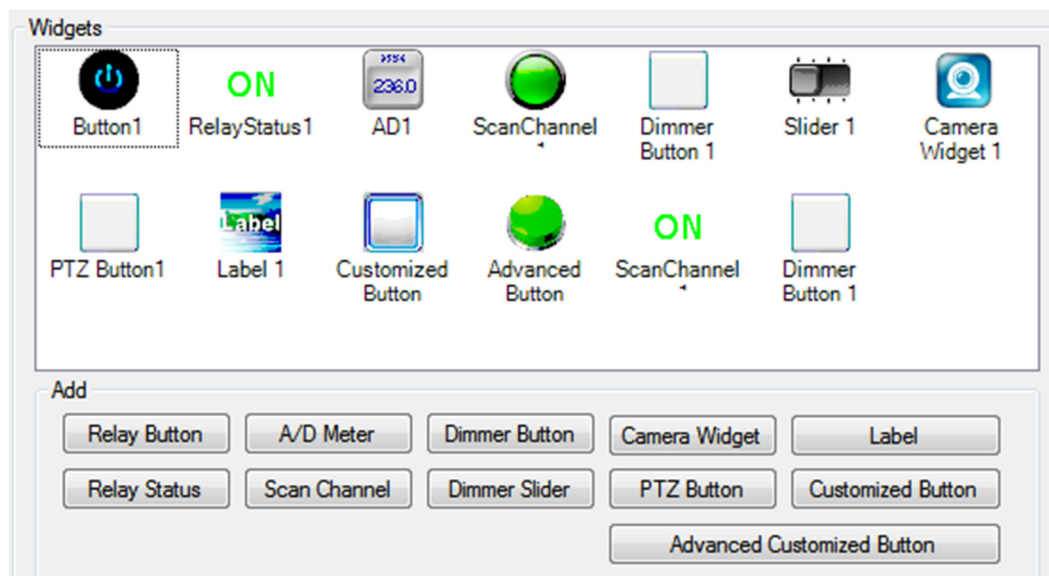
The type of device and connection method must be selected on **N-Button Pro Manager** before creating any widget to control the device.



- N-Button Lite supports devices of National Control Devices, ENTTEC, Velleman, Mobotix, Axis, Panasonic, Bosh IP cameras and also other serial port/USB or network devices.
- N-Button Pro supports settings for **Show Order**, **Web Interface**, **Hide/Show Hotkey**, **Opacity**, and **Background** of widgets, **Auto run after login Windows**, as well as **Password** for opening this Manager panel. N-Button Lite allows you to access the created widgets remotely. The widgets can be viewed and controlled through a web browser.



- 11 types of widgets can be created **Relay Button**, **Relay Status**, **A/D Meter**, **Scan Channel**, **Dimmer Button**, **Dimmer Slider**, **Camera Widget**, **PTZ Button**, **Label**, **Customized Button**, and **Advanced Customized Button**.



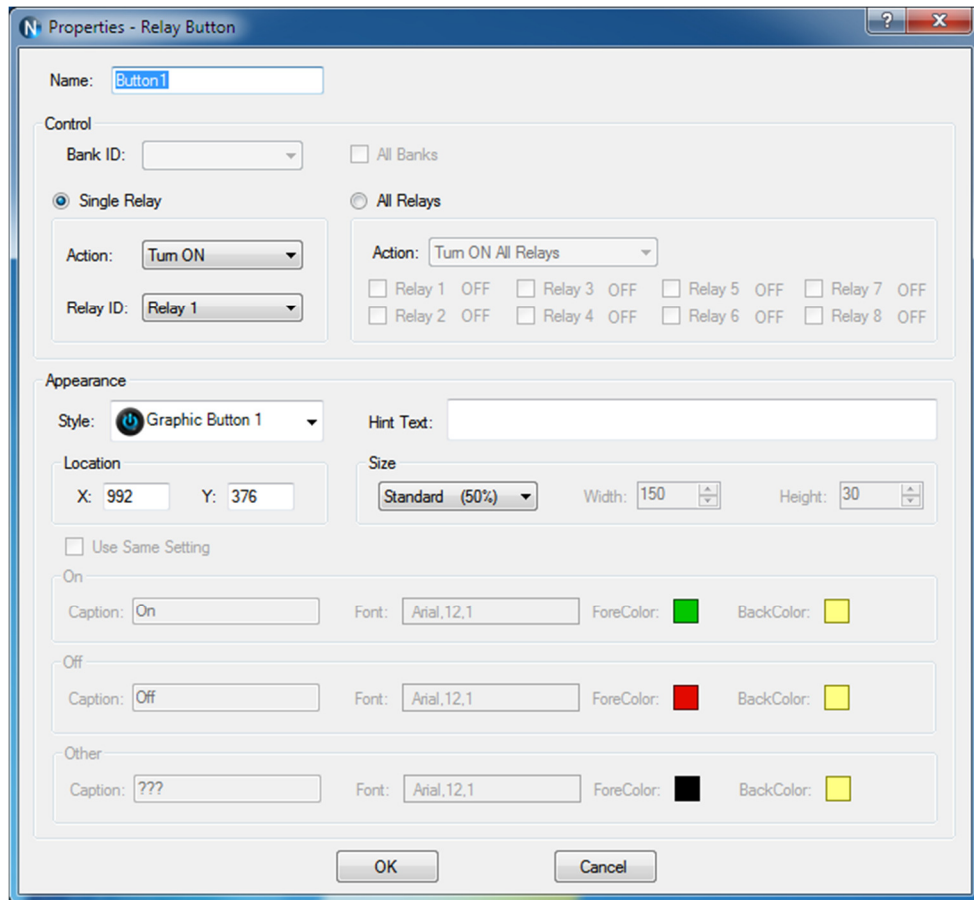
*N-Button Lite version supports up to 16 widgets only.

*N-Button Pro version supports up to 256 widgets.

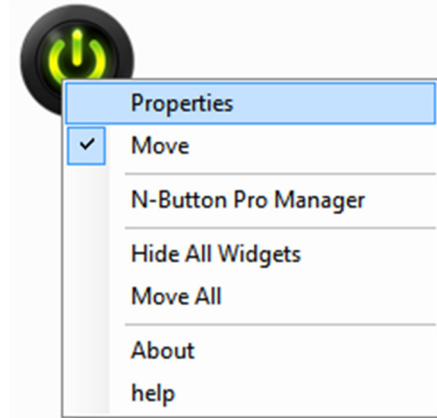
Add Relay Button

Step 1: Click “Relay Button” on N-Button Pro Manager to show **Properties – Relay Button** dialog. This dialog is used to set control action and appearance for Relay Button widgets.

Relay Button widget can be set to control single relay or multi relays. It can turn on/off relays, toggle relay status, and set status of relays.



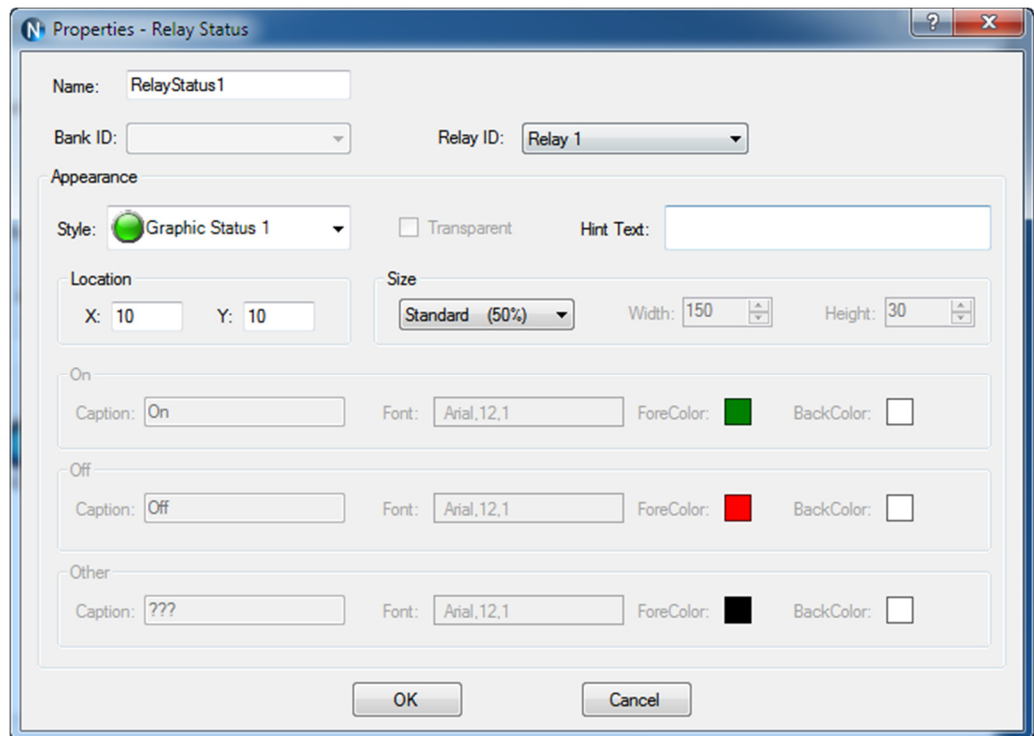
Step 2: Right-click a created Relay Button, selecting the **Properties** option on pop-up menu to edit its properties.



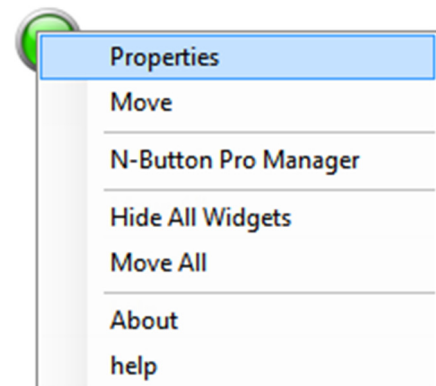
Add Relay Status

Step 1: Click “Relay Status” on N-Button Pro Manager to show **Properties - Relay Status** dialog. This dialog is used to set relay ID and appearance for Relay Status widgets.

Relay Status is used to indicate the specific relay’s status. It has three status, On/Off and other (unknown). The widget will be refreshed automatically when a relay’s command is issued. If it fails to get the status of the relay, it will show the status of unknown. Use Relay Status widgets with Relay Button widgets together to control the relays and show their status on the desktop.



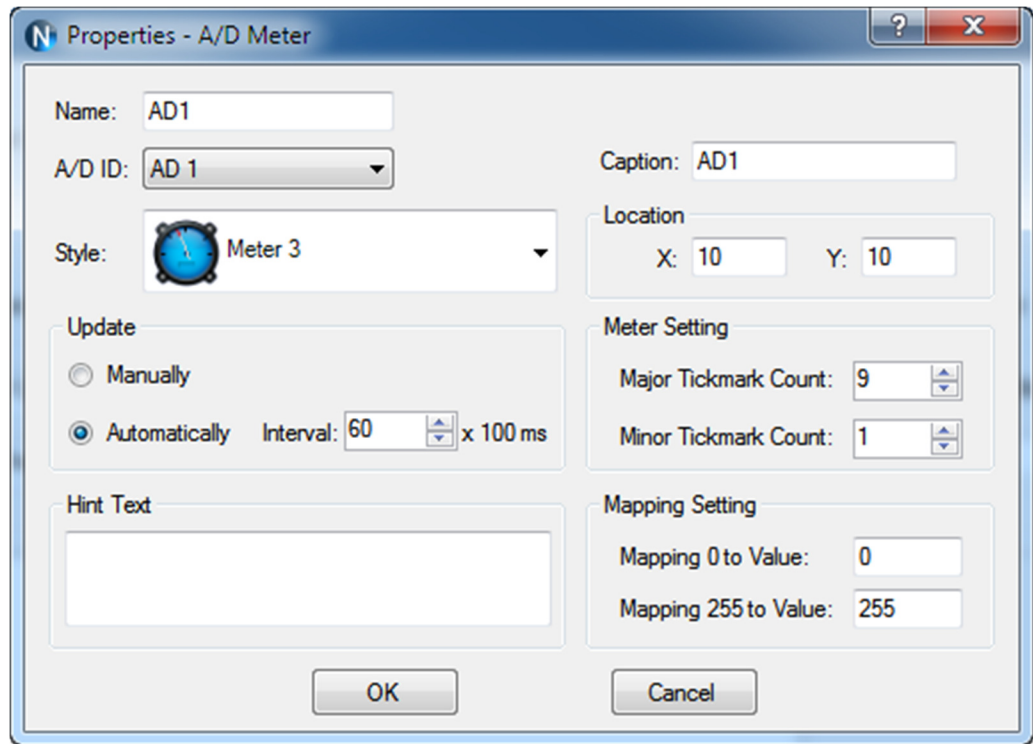
Step 2: Right-click a created Relay Status, selecting the **Properties** option on pop-up menu to edit its properties.



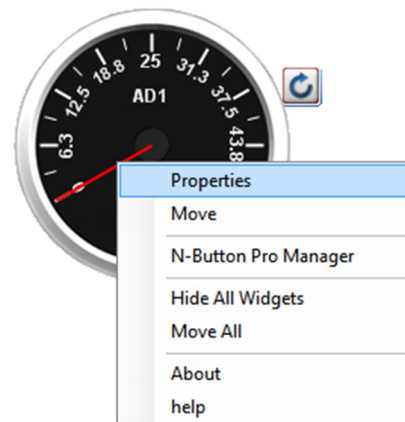
Add AD Meter

Step 1: Click “AD Meter” on N-Button Pro Manager to show **Properties - AD Meter** dialog. This dialog is used to set relay ID and appearance for A/D widgets.

AD Meter widget will read the value of A/D channel and show the value on the screen. The raw value of A/D channel is 0-255. The meter can map the value to different range, like 0-5, which is voltage on A/D channel or other values you want. The widgets can update the value at specific interval automatically as well as refreshed manually.



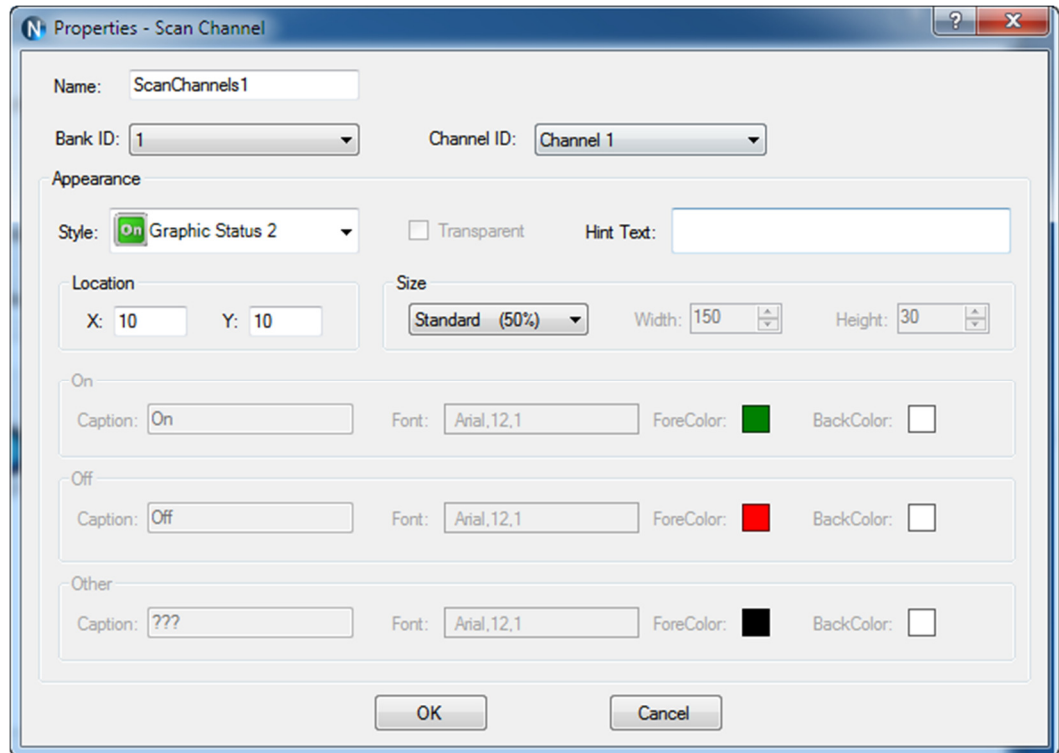
Step 2: Right-click a created AD Meter, selecting the **Properties** option on pop-up menu to edit its properties.



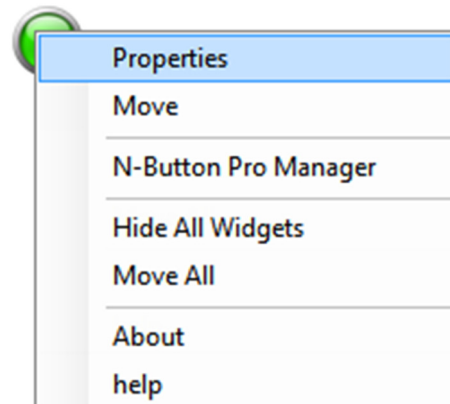
Add Scan Channel

Step 1: Click “Scan Channel” on N-Button Pro Manager to show **Properties – Scan Channel** dialog.

Scan Channel is used to read the contact closure inputs. It will show On/Off and other (unknown). The widget will show the status of the contact closure inputs automatically. If it fails to get the status of the inputs, it will show the status of unknown.

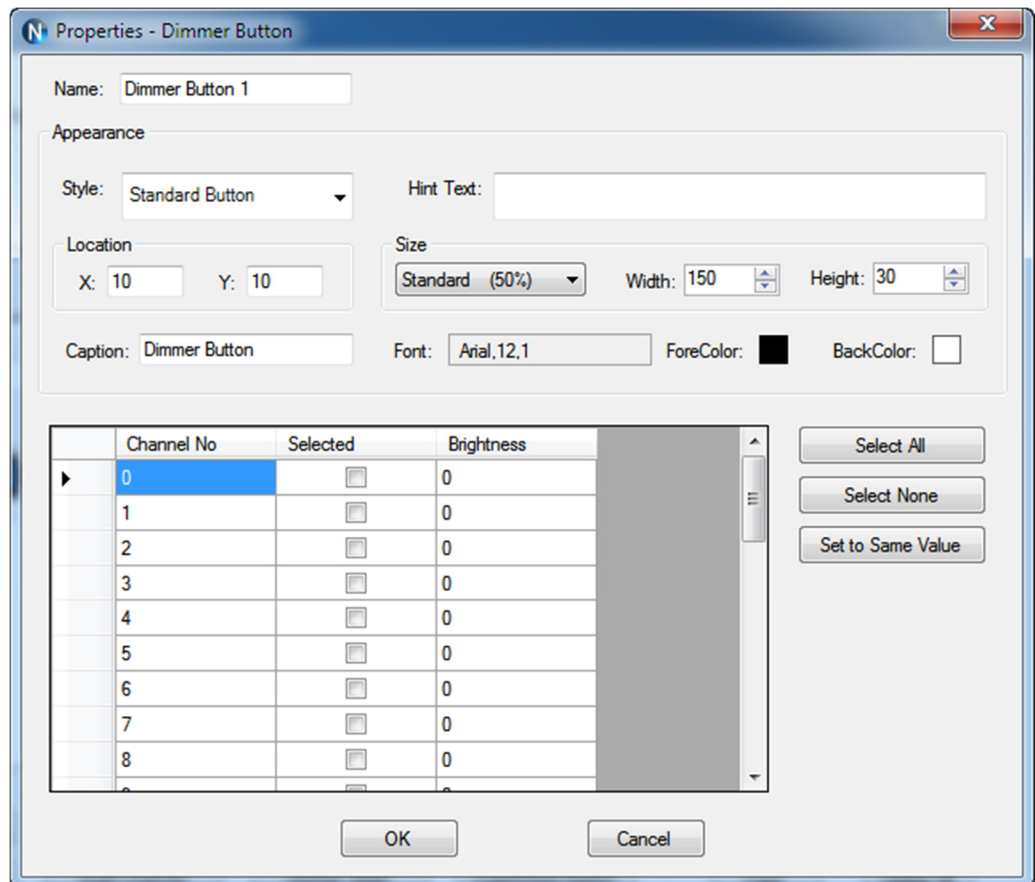


Step 2: Right-click a created Label, selecting the **Properties** option on pop-up menu to edit its properties.

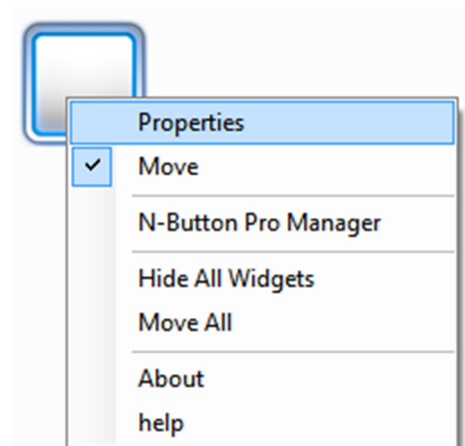


Add Dimmer Button

Step 1: Click “Dimmer Button” on N-Button Lite Manager to show **Properties - Dimmer Button** dialog. This dialog is used to show a static text or an image.

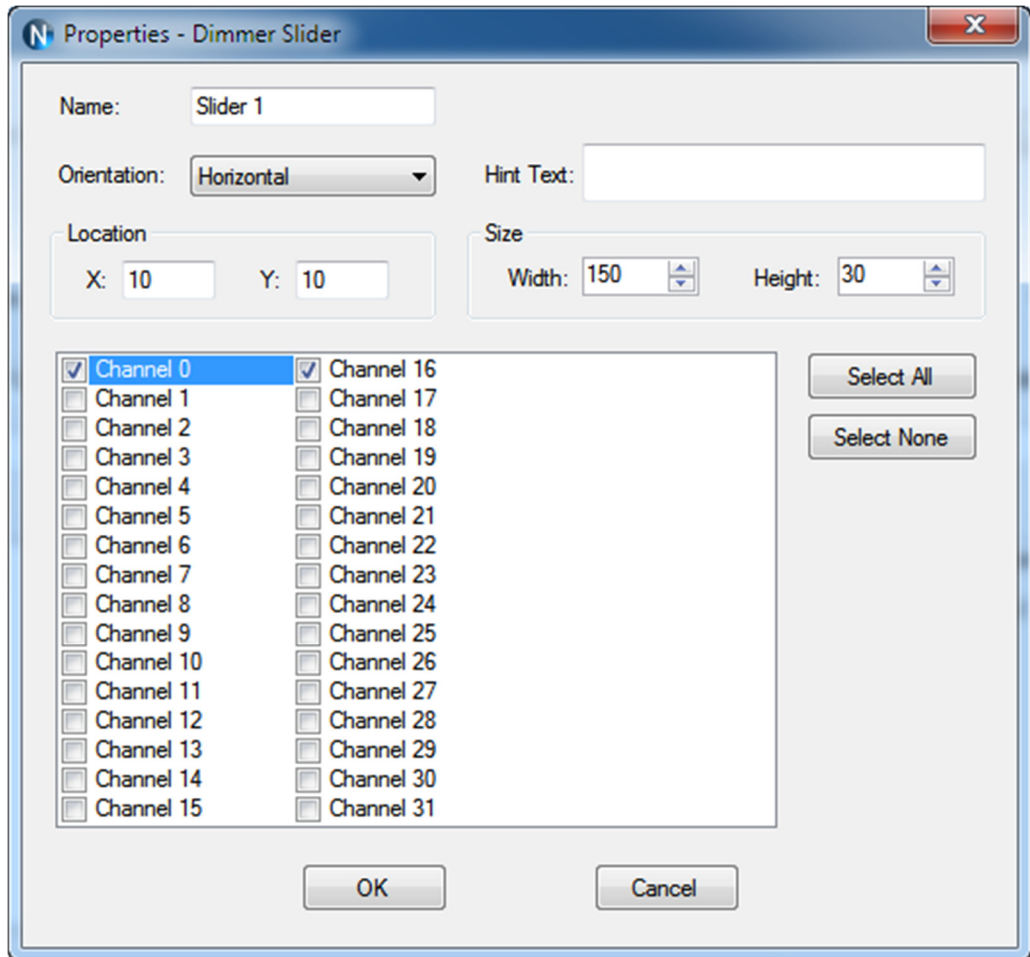


Step 2: Right-click a created Label, selecting the **Properties** option on pop-up menu to edit its properties.

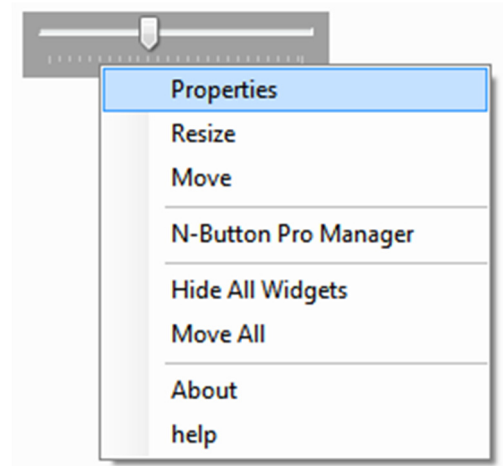


Add Dimmer Slider

Step 1: Click “Dimmer Slider on N-Button Lite Manager to show **Properties – Dimmer Slider** dialog. This dialog is used to show a static text or an image.

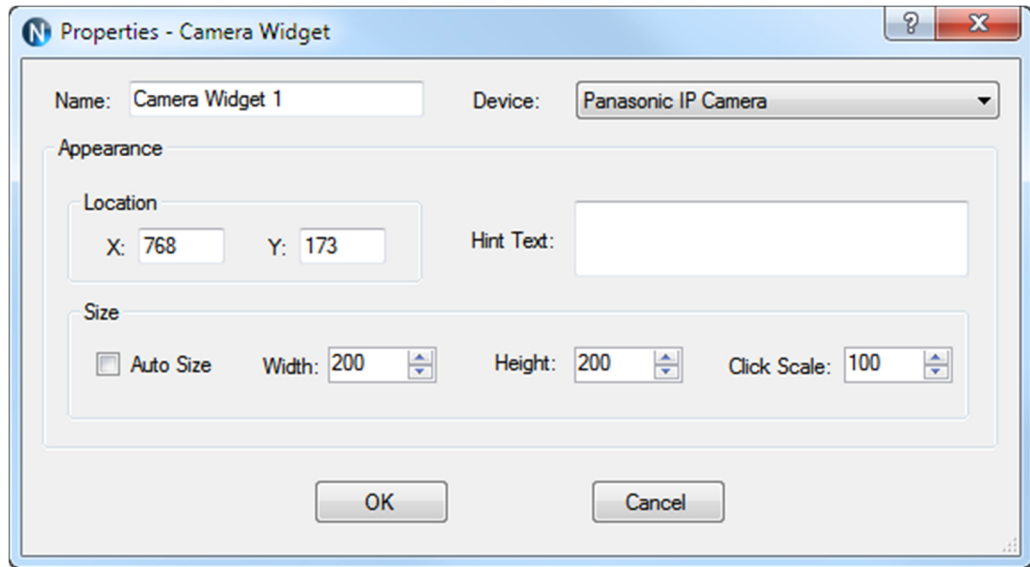


Step 2: Right-click a created Label, selecting the **Properties** option on pop-up menu to edit its properties.

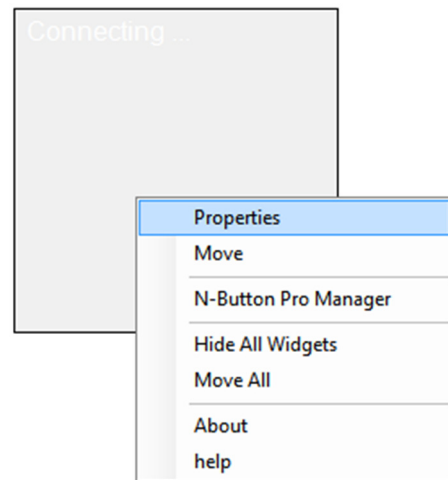


Add Camera Widget

Step 1: Click “Camera Widget” on N-Button Pro Manager to show **Properties – Camera Widget** dialog. This dialog is used to set action and appearance for Camera Widget.

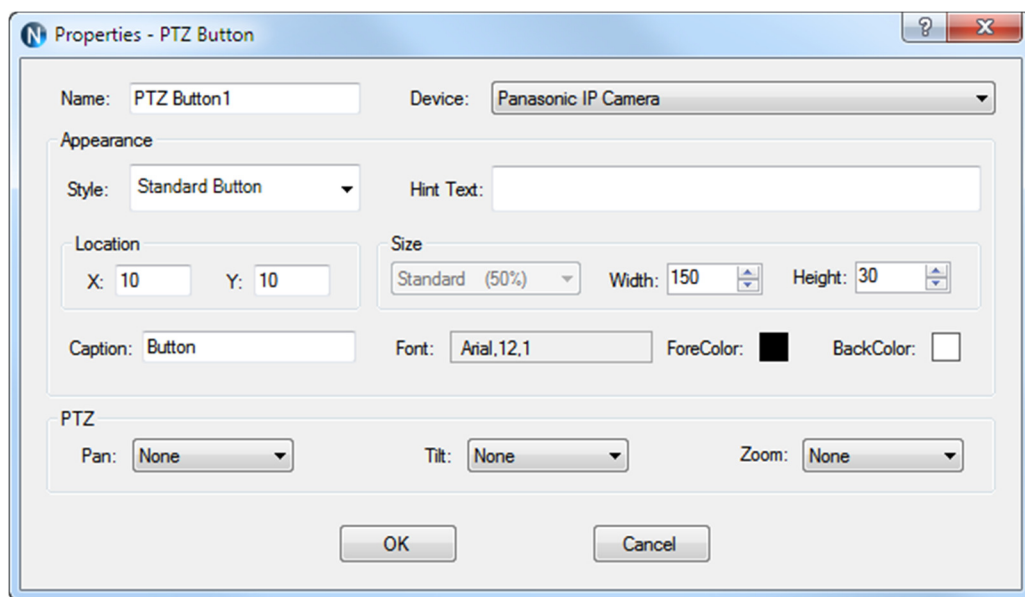


Step 2: Right-click a created Label, selecting the **Properties** option on pop-up menu to edit its properties.

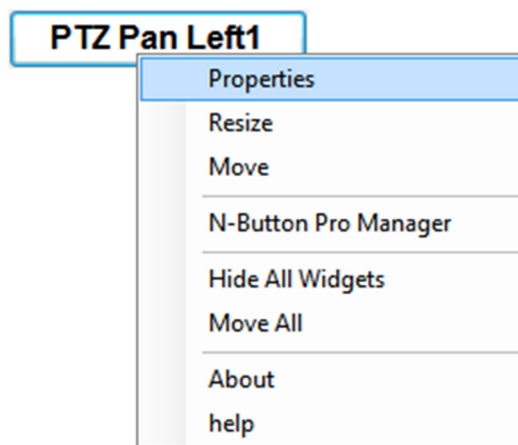


Add PTZ Button

Step 1: Click “Label” on N-Button Pro Manager to show **Properties – Label** dialog. This dialog is used to set action and appearance for PTZ Button widgets.

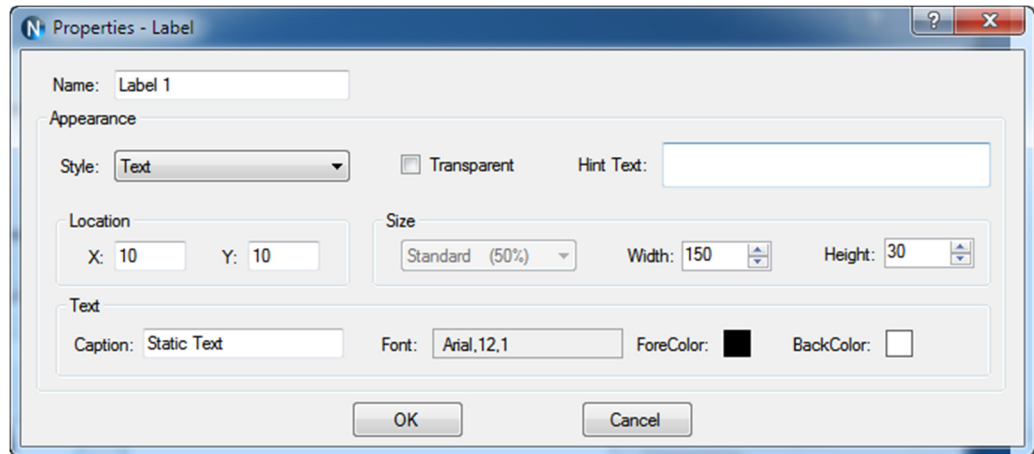


Step 2: Right-click a created Label, selecting Properties option on pop-up menu to edit its properties.



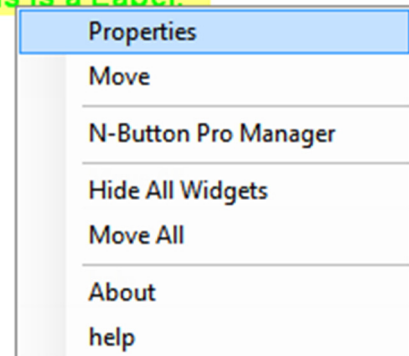
Add Label

Step 1: Click “Label” on N-Button Pro Manager to show **Properties – Label** dialog. This dialog is used to show a static text or an image.



Step 2: Right-click a created Label, selecting the **Properties** option on pop-up menu to edit its properties.

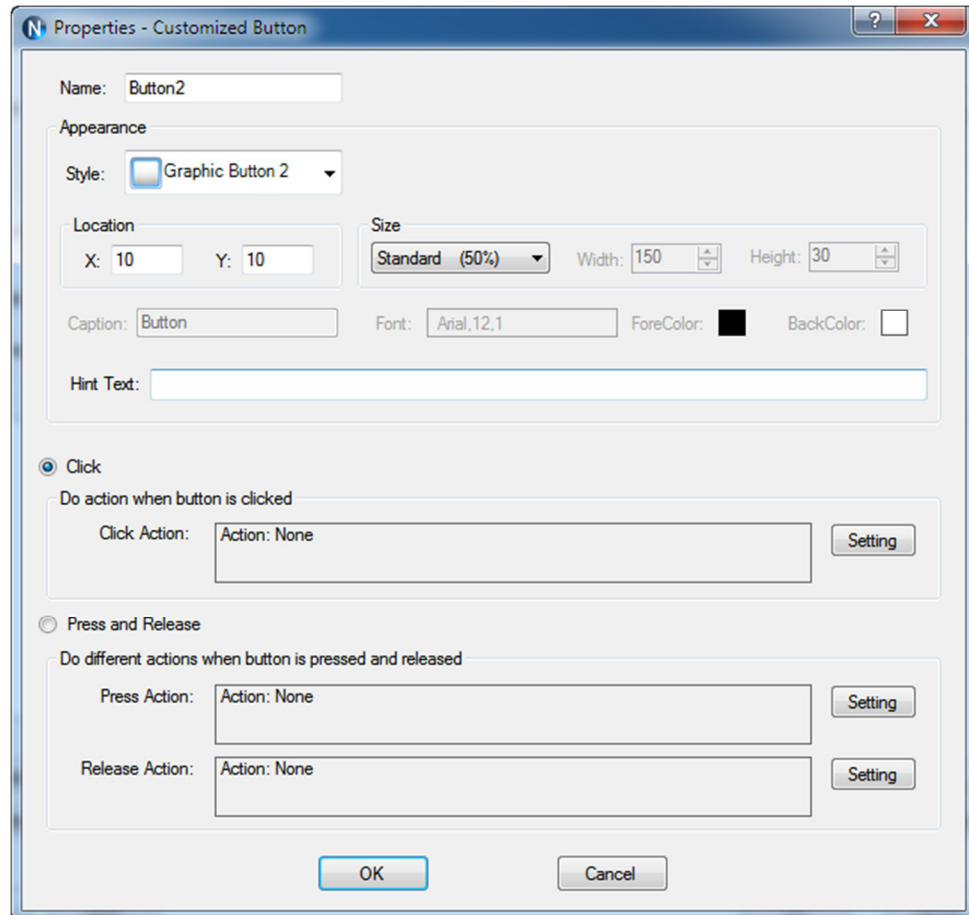
This is a Label.



Add Customized Button

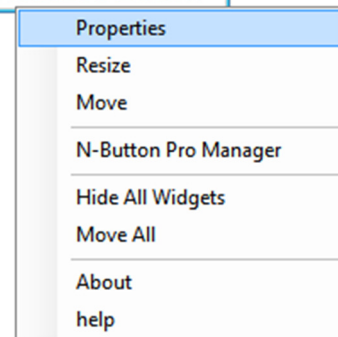
Step 1: Click “Customized Button” on N-Button Pro Manager to show Properties – Customized Button dialog. This dialog is used to set action and appearance for Customized Button widgets.

Customized Button can be set to send specified data to any other connected devices besides relay boards. It also can be set to open a file, a folder or a program, run any application and send http request.



Step 2: Right-click a created Customized Button, selecting the Properties option on pop-up menu to edit its properties.

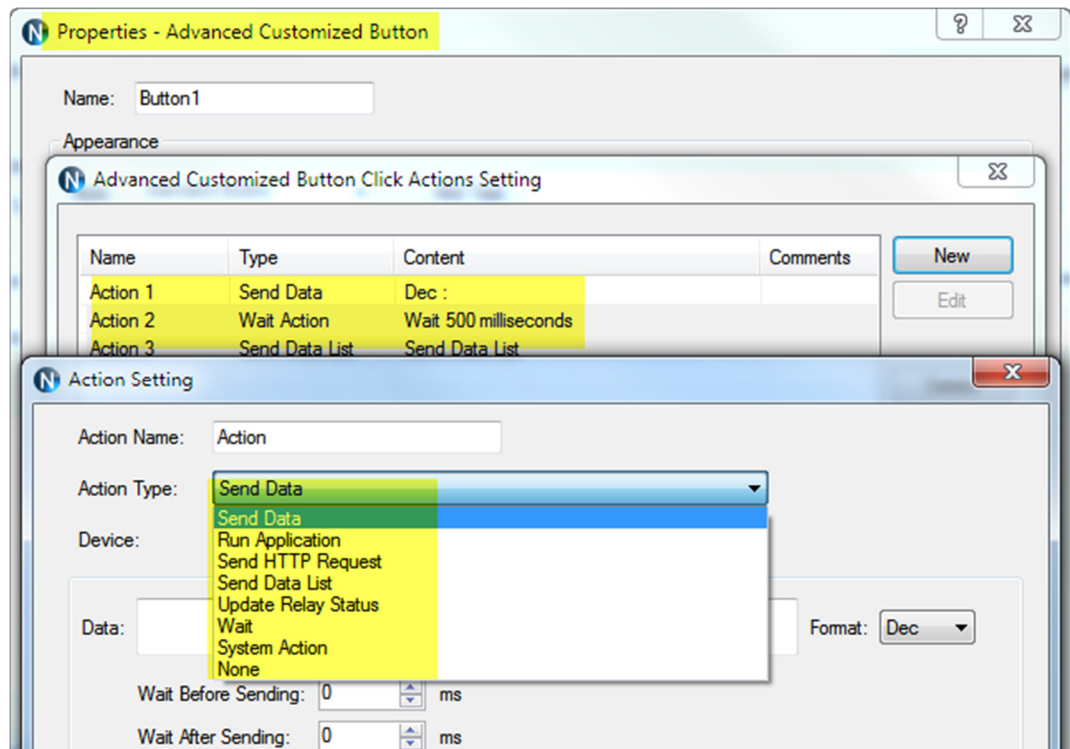
Customized Button



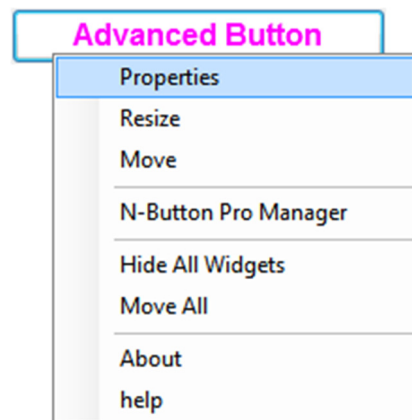
Add Advanced Customized Button

Step 1: Click “Advanced Customized Button” on N-Button Pro Manager to show Properties – Advanced Customized Button dialog. This dialog is used to set action and appearance for Advanced Customized Button widgets.

Advanced Customized Button allows you to control different devices at the same time. Several actions can be added and each action can work for a different device.



Step 2: Right-click a created Label, selecting Properties option on pop-up menu to edit its properties.



Exit

Right click N-Button Pro icon on status bar to show pop-up menu.
Click **Exit** item to quit N-Button Pro.

