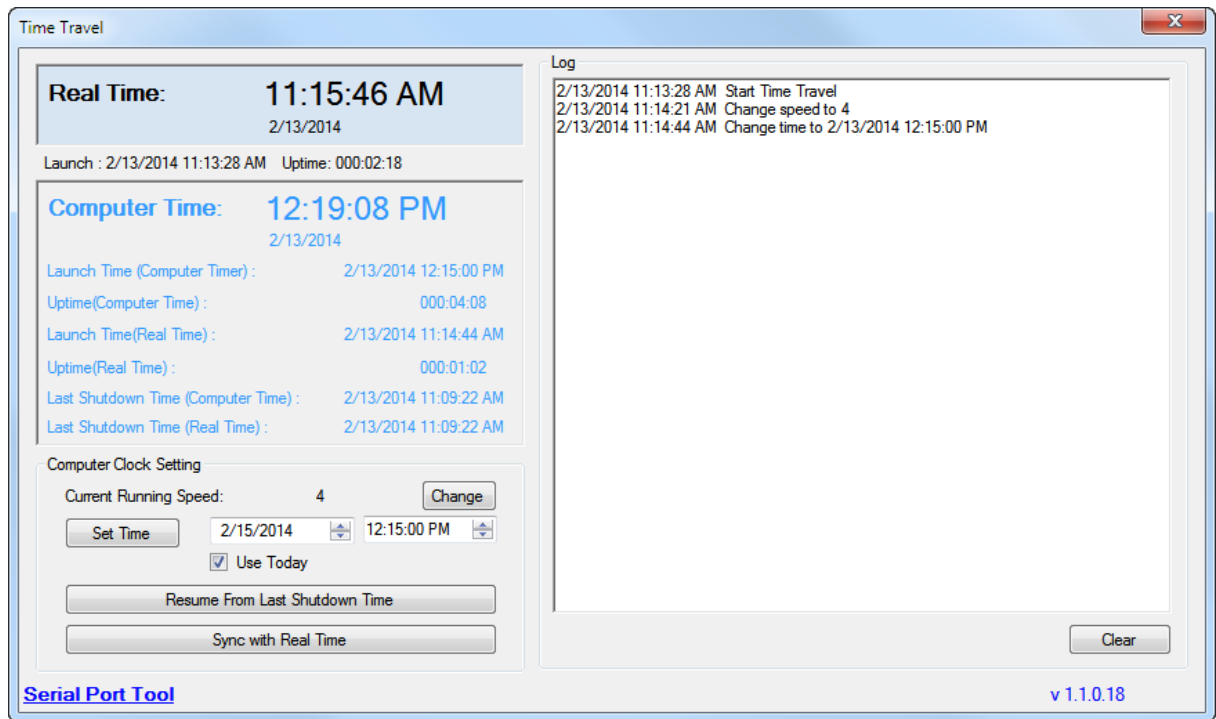


SERIAL PORT TOOL

Time Travel Quick Start Guide



Getting Started

Time Travel is a **FREE** tool to change the speed of a computer's clock.

Time Travel can override the current computer clock with any time value and can turn the running speed of the clock.

If the speed is set as 3600 times, that means a day will pass just in 24 seconds!

Time Travel is a handy tool for testing applications based on a computer's clock, like timer software, schedule software, or automation software.

Time Travel provides you a very fast way to test other software.

Features

- Change the computer's clock to any specified time
- Keeps track of the current time after the computer's clock is changed
- Auto set back the computer clock to the current local time after exit the program
- Easy to change the running speed for the computer clock
- Save and load Configuration automatically
- Support resume function
- Show log information

How to Use

1. Download TimeTravel.zip and unzip it.
2. Run TimeTravel.exe.
(It needs to be ran as an administrator. Right-click the TimeTravel.exe file>Run as administrator.)
3. Click the **Change** button to change the running speed of the computer's clock.
4. Click the **Set Time** button. This will change the computer's clock to a specified time.
5. The **Resume From Last Shutdown Time** button when clicked will resume the computer to its last time (the set computer time, not the local current time). This is made in case the computer accidentally shuts down during Time Travel.
6. The **Sync with Real Time** button will change the computer's clock to the local Real Time. If the Current Running Speed is 1, the computer clock will run the same speed as the local Real Time.
7. When you close/exit the program, your computer clock will be set to your current local time automatically.

